

**2016**

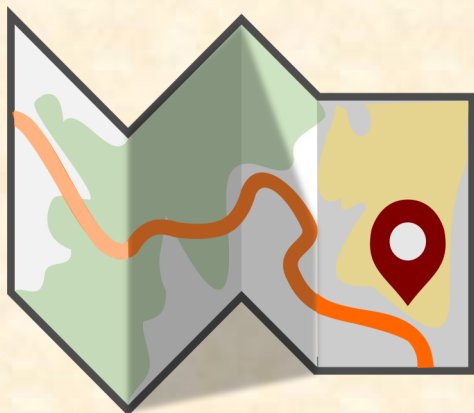
**Annual Report**



**Cuyahoga County**  
**Court of Common Pleas-**  
**Juvenile Division**

# TABLE OF CONTENTS

|   |                    |
|---|--------------------|
| <u>TABLE OF CONTENTS</u>  | <u>Pages 2-3</u>   |
| <u>2016 JUDGES, COURT ADMINISTRATOR &amp; MISSION STATEMENT</u> | <u>Page 4</u>      |
| <u>OPEN LETTER</u>  | <u>Pages 5-7</u>   |
| <u>OFFICE LOCATIONS</u>   | <u>Pages 8-11</u>  |
| <u>FISCAL</u>   | <u>Page 12</u>     |
| <u>DETENTION SERVICES</u>                                       | <u>Pages 13-19</u> |
| Detention Services  | Page 13            |
| Population  | Page 13            |
| Housing Units   | Page 13            |
| Educational Services  | Page 14            |
| Medical Services  | Page 14            |
| Mental Health Services  | Page 15            |
| Staff Training  | Page 15            |
| Trauma Training and Services                                    | Page 16            |
| Booking Process for Cleveland Police Districts                  | Pages 16-17        |
| Ohio Administrative Code Standard Inspection                    | Page 17            |
| Volunteer Services  | Pages 17-19        |



# TABLE OF CONTENTS

|   |  |                           |
|---|--|---------------------------|
| <b><u>PROBATION SERVICES</u></b>                    |  | <b><u>Pages 20-28</u></b> |
| Probation Investigation                             |  | Page 20                   |
| Probation Supervision                               |  | Page 20                   |
| Probation Support Services                          |  | Page 21                   |
| Ohio Youth Assessment System (OYAS)                 |  | Page 21                   |
| Effective Practice in Community Supervision (EPICS) |  | Page 22                   |
| Motivational Interviewing (MI)                      |  | Page 22                   |
| Specialized Dockets                                 |  | Pages 22-23               |
| Community Service/Restitution Program               |  | Page 24                   |
| Multi-Systemic Therapy Program (MST)                |  | Page 25                   |
| Placement Planning Day Report                       |  | Page 26                   |
| Placement Aftercare                                 |  | Pages 26-27               |
| School-Based Probation                              |  | Page 27                   |
| Behavioral Health Juvenile Justice (BHJJ)           |  | Page 28                   |
| Cognitive Behavioral Therapy Center                 |  | Page 28                   |
| <b><u>COURT OPERATIONS</u></b>                      |  | <b><u>Pages 29-32</u></b> |
| Court Operations Division                           |  | Page 29                   |
| CASA of Cuyahoga County                             |  | Page 29                   |
| Booking Process for Cleveland Police Districts      |  | Page 30                   |
| Juvenile Detention Alternatives Initiative (JDAI)   |  | Pages 31-32               |
| Information Services (IS)                           |  | Page 32                   |
| <b><u>LEGAL DIVISION</u></b>                        |  | <b><u>Pages 33-34</u></b> |
| Legal Division                                      |  | Page 33                   |
| Intake and Diversion Unit                           |  | Page 33                   |
| Clerk's Office                                      |  | Pages 33-34               |
| <b><u>STATISTICS DIRECTORY &amp; STATISTICS</u></b> |  | <b><u>Pages 35-50</u></b> |
| <b><u>NOTES</u></b>                                 |  | <b><u>Page 51</u></b>     |

*Mary J. Davidson, Editor*

# Judges, Court Administrator and Mission Statement

## JUDGES



**Alison L. Floyd, Michael J. Ryan,  
Kristin W. Sweeney, Administrative Judge,  
Patrick F. Corrigan, Denise N. Rini  
and Thomas F. O'Malley  
(Pictured from left to right )**

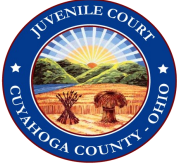
## COURT ADMINISTRATOR

**Terease Z. Neff**

## MISSION STATEMENT

**To Administer justice, rehabilitate juveniles, support and strengthen families, and promote public safety.**

# OPEN LETTER



## COURT OF COMMON PLEAS JUVENILE COURT DIVISION

COUNTY OF CUYAHOGA  
9300 Quincy Avenue  
CLEVELAND, OHIO 44106  
(216) 443-8400  
FAX: (216) 348-4039

**Kristin W. Sweeney**  
ADMINISTRATIVE JUDGE

**Terease Z. Neff**  
COURT ADMINISTRATOR

JUDGES  
PATRICK F. CORRIGAN  
ALISON L. FLOYD  
THOMAS F. O'MALLEY  
MICHAEL J. RYAN  
DENISE N. RINI

The Citizens of Cuyahoga County  
The Honorable Maureen O'Connor  
Chief Justice, The Supreme Court of Ohio  
Armond Budish  
Cuyahoga County Executive  
Dan Brady  
President, Cuyahoga County Council  
Harvey J. Reed  
Director, Ohio Department of Youth Services

Greetings:

In writing my opening letter for the annual report of 2016, it was a challenge to select one of the many events and initiatives to highlight. This year, I've decided to tell you about our Best Practices initiatives across court programs.

## OPEN LETTER

One of the court's most important operational goals is to implement best practices specific to juvenile justice. Best practices are national standards determined by the Office of Juvenile Justice and Delinquency Prevention (OJJDP), the Annie E. Casey Foundation and the MacArthur Foundation's Model for Change Initiative. These national standards based on research from across the United States. Our goal is to make sure that our programs are implemented and maintained with these evidence based best practices (EBPs) in mind.

The following probation programs are utilized to address and treat factors that contribute to delinquency. These programs are closely monitored for quality assurance to ensure they deliver meaningful outcomes:

- Cognitive Behavioral Therapy Center (CBT) utilizes the Thinking for a Change curriculum to address criminal thinking with offenders in a group setting.
- Functional Family Therapy (FFT) is an evidence-based family therapy interventions designed to treat violent, criminal, behavioral, and educational problems in the community.
- Multi-Systemic Therapy (MST) is an intensive family and community based therapy model designed to treat chronic and violent juvenile offenders. Treatment incorporates families, schools, neighborhoods, and peers.
- Behavioral Health Juvenile Justice (BHJJ) engages a specialized probation unit, developed to serve the most deep-end mental health youth with evidence-based services only.

We want to protect the community. We want effective treatment options for kids and families and we need our programs to be cost-effective. We achieve positive outcomes from community-based and residential placements through honest feedback to and from vendors and treatment providers. We routinely conduct audits of facilities in order to monitor such factors as recidivism rates and length-of-stay in residential placements. From these audits, we have determined that county agencies are cheaper than out-of-county placements because our probation officers can get there more frequently. In contrast, the farther away these programs are, the more expensive their outcomes.

## OPEN LETTER

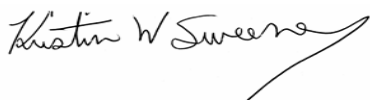
In the detention home (DH), we are implementing Core Correctional Practices (CCP). The Ohio Department of Youth Services (ODYS) awarded us a grant for Detention Alternatives and Enhancements, which we used to train all detention staff in CCP. The grant covered the cost of overtime incurred for the training.

We are addressing mental health issues in the DH through funding provided through the ADAMHS Board. Applewood is our treatment provider and they provide one mental health clinician per house. These clinicians use a trauma-informed approach that assist youth in crisis in the detention center while educating Detention Center staff in trauma issues.

We are also implementing a behavioral management system in the DH. This system allows, for the first time, detention officers and probation officers to use the same language in working with residents.

Along with the report of our achievements, I hereby submit, in compliance with Ohio Revised Code Sections 2151.18 and 2151.71, the 2016 Annual Report of the Cuyahoga County Juvenile Court regarding the number and kinds of cases coming before it, their dispositions and other data pertaining to the work of the Court.

Sincerely,



Kristin W. Sweeney, Administrative Judge



# OFFICE LOCATIONS

## COURT LOCATIONS

### MAIN COURT

**Cuyahoga County Juvenile Justice Center**

**9300 Quincy Avenue**

**Cleveland, Ohio 44106**

**(216) 443-8400**

### DETENTION CENTER

**Cuyahoga County Juvenile Justice Center**

**9300 Quincy Avenue**

**Cleveland, Ohio 44106**

**(216) 443-3300**

### METZENBAUM BUILDING

**3343 Community College Avenue**

**Cleveland, Ohio 44115**

**(216) 443-3452**



# INTAKE & DIVERSION OFFICE LOCATIONS

## CUYAHOGA COUNTY JUVENILE JUSTICE CENTER

**9300 Quincy Avenue**

**Cleveland, Ohio 44106**

**(216) 443-8428**

**All Intake Officer Bypass cases, Consent to Marry Applications,  
Certifications and Centralized Case Distribution.**

**Court Unruly Project Coordinator, Cleveland Police Department-  
Districts 1-5, Steelyard Commons & 3rd District downtown store security,  
Positive Education Program referrals, Cleveland Lakefront State Park,  
Cuyahoga County Division of Children & Family Services, Cleveland  
Metropolitan School District – Board of Education Cases, Sheriff’s Department,  
Mayfield Village, Euclid, East Cleveland, Metro Health,  
Case Western Reserve University, Waiver of Parental Notification, and Utilities.**

**The following Law Enforcement Agencies:**

**Norfolk/Southern & Conrail Railroad,**

**Regional Transit Authority,**

**Cleveland Metropolitan Housing Authority,**

**Cleveland State University Police Department,**

**Cuyahoga Community College Police Department**

**-file with the Intake & Diversion Department and/or**

**the Juvenile Division of the Prosecutor’s Office.**

# INTAKE & DIVERSION OFFICE LOCATIONS

## WEST SIDE

### Lakewood Office

12650 Detroit Avenue, Lakewood, Ohio 44107 (216) 518-3332; (216) 521-2216 (fax)

Areas Served: Lakewood, Bay Village, Fairview Park, North Olmsted, Rocky River, Westlake, Metro Parks, Olmsted Falls, Olmsted Township, Brook Park, Suburban Boards of Education, and Citizens.

### Southwest Office

5361 Pearl Road, Parma, Ohio 44129 (216) 443-5381; (216) 749-2031 (fax)

Areas Served: Linndale, Brooklyn, Brooklyn Hts., North Royalton, Parma, Parma Hts., Seven Hills, Broadview Hts., Berea, Middleburg Hts., Strongsville, Suburban Boards of Education, and Citizens.

## EAST SIDE

### Garfield Office

5555 Turney Road, Garfield Hts., Ohio 44125 (216) 518-3332; (216) 518-3334 (fax)

Areas Served: Brecksville, Independence, Garfield Hts., Maple Hts., Valley View, Walton Hills, Garfield Post-OSHP, Ohio Dept. of Liquor Control, Division of Ohio State Highway Patrol, Gates Mills, Suburban Boards of Education, and Citizens.

### East Cleveland/University Circle Office

11811 Shaker Blvd. 4th Floor, Cleveland, Ohio 44106 (216) 698-7364; (216) 443-8064 (fax)

Areas Served: Cleveland Clinic, Cleveland Hts., Bratenahl, University Circle, South Euclid, Euclid Store Security, Lyndhurst, Richmond Hts., Suburban Boards of Education, and Citizens.

### Southeast Office

21100 Southgate Pkwy Suite #3, Maple Hts., Ohio 44137 (216) 663-6583; (216) 663-2351 (fax)

Areas Served: Beachwood, Bedford, Bedford Hts., Bentleyville, Highland Hills, Highland Hts., Mayfield Hts., Moreland Hills, Oakwood, Pepper Pike, Shaker Hts., University Hts., Woodmere, Warrensville Hts., Glenwillow, Solon, Orange, Chagrin Falls and TWP., North Randall, Hunting Valley, Suburban Boards of Education, and Citizens.

# PROBATION OFFICE LOCATIONS

**CENTRAL INVESTIGATIONS** 3343 Community College Avenue, Cleveland, Ohio 44115  
(216) 443-3573; (216) 698-2714 (fax)

**COMMUNITY SERVICE** 9300 Quincy Avenue, Cleveland, Ohio 44106  
(216) 698-4727; (216) 443-3494 (fax)

**COGNITIVE BEHAVIORAL THERAPY CENTER** 3343 Community College Avenue,  
Cleveland, Ohio 44115 (216) 443-3131; (216) 443-8046 (fax)

**EAST CLEVELAND/UNIVERSITY CIRCLE Regional 3 & 4**  
11811 Shaker Boulevard 3rd Floor, Cleveland, Ohio 44120  
**Regional 3:** (216) 698-4554; (216) 443-8035 (fax)  
**Regional 4:** (216) 443-5493; (216) 443-8046 (fax)

**GRANTS MANAGEMENT** 9300 Quincy Avenue, Cleveland, Ohio 44106  
(216) 698-4791; (216) 443-8433 (fax)

**MULTI-SYSTEMIC THERAPY** 3343 Community College Avenue, Cleveland, Ohio 44115  
(216) 443-5938; (216) 698-2053 (fax)

**NEAR WEST SUPERVISION** 3343 Community Avenue, Cleveland, Ohio 44115  
(216) 698-2708; (216) 443-2185 (fax)

**PLACEMENT AFTER CARE UNIT** 3343 Community College Avenue, Cleveland, Ohio 44115  
(216) 443-3107; (216) 698-2053 (fax)

**PROBATION SUPPORT SERVICES** 9300 Quincy Avenue, Cleveland, Ohio 44115  
(216) 443-3538; (216) 443-3476 (fax)

**SCHOOL BASED LIAISONS** 3343 Community College Avenue, Cleveland, Ohio 44115  
(216) 926-2808; (216) 698-2053 (fax)

**SOUTHEAST SUPERVISION** 21100 Southgate Park Boulevard, Maple Heights, Ohio 44137  
(216) 443-5348; (216) 663-2351 (fax)

**SOUTHWEST SUPERVISION** 5361 Pearl Road, Parma, Ohio 44129  
(216) 443-5379; (216) 749-2031 (fax)

**SPECIAL SERVICES INVESTIGATIONS** 9300 Quincy Avenue, Cleveland, Ohio 44106  
(216) 348-4490; (216) 443-3494 (fax)

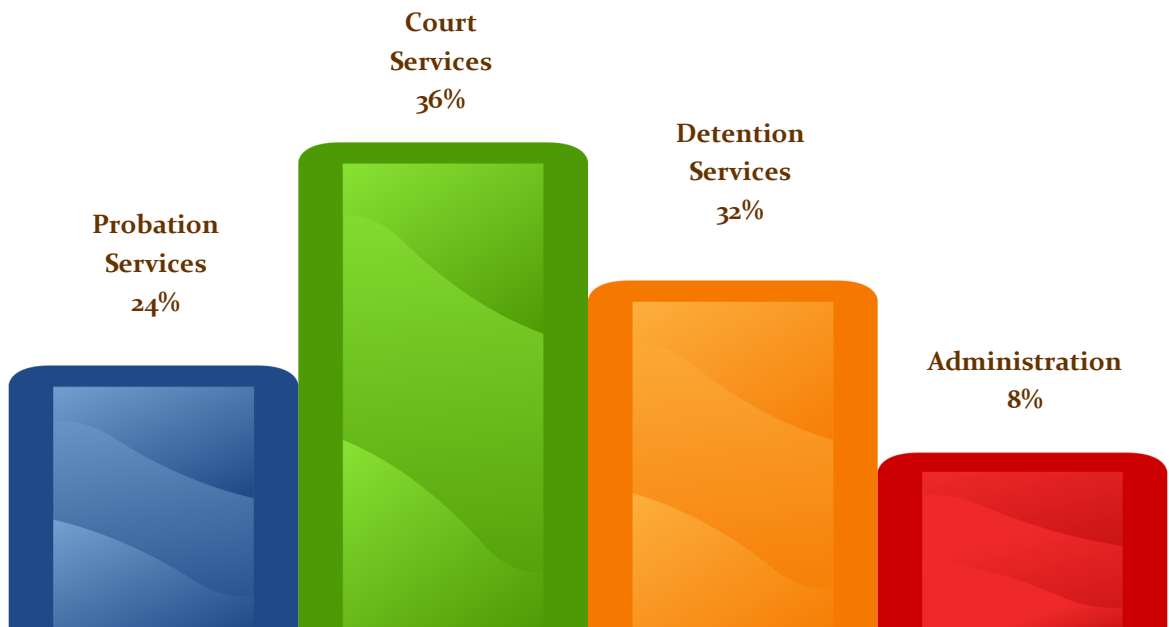
**SPECIALIZED DOCKETS** 9300 Quincy Avenue, Cleveland., Ohio 44106  
(216) 698-4727; (216) 443-3494 (fax)

**PLACEMENT PLANNING** 3343 Community College Avenue,  
Cleveland, Ohio 44115  
(216) 698-6578; (216) 698-2053 (fax)

**BEHAVIORAL HEALTH JUVENILE JUSTICE** 3343 Community College Avenue,  
Cleveland, Ohio 44115  
(216) 443-3142; (216) 698-2053 (fax)

# FISCAL

|                            | <u>Administration</u> | <u>Court Services</u> | <u>Detention Services</u> | <u>Probation Services</u> | <u>Total</u>         |
|----------------------------|-----------------------|-----------------------|---------------------------|---------------------------|----------------------|
| <b>Salaries</b>            | 2,300,464.24          | 7,438,256.43          | 7,839,089.08              | 4,480,129.76              | <b>22,057,939.51</b> |
| <b>Fringe Benefits</b>     | 980,252.89            | 3,374,275.25          | 3,292,921.13              | 2,017,124.69              | <b>9,664,573.96</b>  |
| <b>Commodities</b>         | 26,940.07             | 61,119.86             | 641,742.64                | 34,187.04                 | <b>763,989.61</b>    |
| <b>Contracts/Services</b>  | 256,660.56            | 4,291,195.51          | 3,288,286.09              | 357,519.04                | <b>8,193,661.20</b>  |
| <b>Controlled Expenses</b> | 120,268.26            | 3,866,623.45          | 2,019,635.12              | 1,140,845.33              | <b>7,147,372.16</b>  |
| <b>Other Expenditures</b>  | 456,933.78            | 453,059.79            | 76,671.72                 | 4,570,136.75              | <b>5,556,802.04</b>  |
| <b>Capital Outlay</b>      |                       | 349.08                | 11.99                     |                           | <b>361.07</b>        |
| <b>Total</b>               | <b>4,141,519.80</b>   | <b>19,484,879.37</b>  | <b>17,158,357.77</b>      | <b>12,599,942.61</b>      | <b>53,384,699.55</b> |



# DETENTION SERVICES

## DETENTION SERVICES

Detention Services administers the care of all juveniles in the secure Detention continuum, including: the Detention Center, Shelter Care, and Home Detention. During the year 2016, the Detention Center had an average daily population of 154 juveniles, Shelter Care an average daily population of 30-45 juveniles, and Home Detention monitored an average caseload of 151 juveniles.

## POPULATION

Admission screening staff use a race-and gender-neutral validated and age appropriate risk assessment instrument (DASI) to determine the appropriate pre-dispositional placement or status necessary to accomplish the purposes of Detention (i.e., ensuring appearance in Court and preventing re-offending). Staff place youth eligible for Detention in the least restrictive alternative needed to accomplish those purposes (e.g., a non-secure setting, home supervision, home electronic monitoring). Admission is limited to the most serious offenders.

Home Detention Officers can provide electronic monitoring surveillance 24 hours per day, so violations can be addressed as they occur. Technology now allows the electronic monitoring of juveniles who do not have telephones landline. The Juvenile Court expanded active GPS surveillance to all Home Detention clients, in order to track the whereabouts of designated juveniles in real time.

## HOUSING UNITS

In the 5 Housing Units, there has been an expansion in programming to educate the residents and provide them with positive reinforcement. Newly admitted residents are provided a thorough orientation by their Social Worker, House Manager, and Detention Officers. The Social Worker provides information pertaining to Court-related Detention procedures. The House Manager and Detention Officers provide information about the daily schedule. They are also given information about the Behavior Management program, Detention rules and sanctions.



# DETENTION SERVICES

## EDUCATIONAL SERVICES

The Downtown Education Center is located inside the Juvenile Detention Center and residents attend the school on site. The Cleveland Metropolitan School District provides a principal, daily operations administrator, chief secretary, an educational aide and fourteen academic teachers. Residents are enrolled in academic classes that are age and grade appropriate. Each student's complete academic records are requested from their "home school" and each student is placed on an individualized academic plan leading to graduation. Records requested include but are not limited to: IEP, ETR, Transcript, and State Testing Scores. All academic gains by the individual student are documented on their transcript and they are sent to their home school via an Exit Report. The School administers the New Ohio State Test (OST) and the Ohio Graduation Test (OGT) for qualifying students. After completion of required credits and passing the needed testing by the State of Ohio, students are issued their high school diploma.

## MEDICAL SERVICES

The Detention Center contracts with MetroHealth Systems to provide on-site, around the clock nursing services for residents. Staffing includes one Managing Registered Nurse, four other registered Nurses, four Licensed Practical Nurses, and one medical secretary. A physician or Nurse Practitioner is also on-site for four hours every weekday, excluding holidays, and physicians are on-call when not on the premises.

MetroHealth physicians complete a physical exam of all residents within seven days of admission. The unit has been participating in the Ohio Department of Health's Infertility Prevention Program since 2003, thereby saving the County substantial funds for STD testing and treatment.

Residents are assured of confidential, unrestricted access to medical care by way of staff referrals for emergency medical needs. Medications are dispensed to residents as prescribed. Special dietary needs due to allergies, pregnancy, etc., are communicated to the food service staff and to living unit staff. Dental and other specialty care is provided by MetroHealth and other community providers.

# DETENTION SERVICES

## MENTAL HEALTH SERVICES

The Alcohol, Drug Addiction, and Mental Health Services Board contracts with Applewood Centers to provide Mental Health Services for Detention Center and Shelter Care residents. The newest model provides five independent, licensed Social Workers on-site forty hours each week and therapists are on-call after hours to assist with any mental health crisis. The therapists are providing special training for all Detention Center staff. Psychiatrists are on-site eight hours each week and they also provide evaluation, counseling, psychotropic medication referrals, monitoring, grief counseling, and crisis intervention, along with referrals for hospital admissions.

The Massachusetts Youth Screening Instrument (MAYSI) was implemented in late 2015 as part of grant funding provided by the Ohio Department of Youth Services. This screening device is self-administered by all youth approved for admission to the Detention Center before arriving on an assigned housing unit. This brief assessment measure is used to identify youths with potential mental, emotional, or behavioral problems-including possible risk indicators such as suicidal behavior-prior to arriving at their assigned housing unit.

## STAFF TRAINING

All Juvenile Detention employees and contracted staff receive annual mandatory Core Competency training that includes Cardio-Pulmonary Resuscitation and Automatic External Defibrillator, Standard First Aid, Blood-borne in Pathogens, Communicable Diseases, Emergency Response (suicide prevention and intervention), Para-Verbal and Verbal De-Escalation techniques, Subject Control Instruction for escorting and Unarmed Self-Defense, fire extinguisher use, and Prison Rape Elimination Act (PREA)/Sexual Assault Sexual Abuse training. Staff who directly supervise residents receive a total of forty hours annually, in accordance with American Correctional Association Accreditation standards. All newly hired direct service staff receive forty hours of pre-service orientation training and 120 hours of on-the-job training before assuming their responsibilities.

# DETENTION SERVICES

## TRAUMA TRAINING AND SERVICES

Recognizing that detained youth experience trauma that can impact their behavior and cause them to act out in ways that are hard to understand and difficult to manage, Detention Center workers now receive training to recognize the signs of trauma in youth and the ways staff can intervene for the best possible outcomes. Detention Center personnel will receive additional training in self-care, as they witness and learn about traumatic events. Interventions in cooperation with Applewood Centers' Mental Health Services can be provided to the residents on an one-on-one basis.

Studies show that this type of training and service can greatly reduce the number of room confinements and restraints and can even create a safer and more comfortable environment for residents and staff.

## BOOKING PROCESS FOR CLEVELAND POLICE DISTRICTS

In 2016, the Juvenile Court began the centralized booking of juveniles arrested by the Cleveland Police. The effort restructures how alleged juvenile offenders arrested by the Cleveland Police are processed and booked after an arrest, something that will permit officers to return to patrolling more quickly. Prior to the change in the process, the alleged juvenile offender was transported from the scene of the offense to the local Cleveland Police District Headquarters. The alleged juvenile offender was then transported downtown to the Justice Center for booking at the Cleveland City Jail, where conditions are not appropriate for minors. If the determination was made that the alleged juvenile offender was to be detained, he or she was transported to the Cuyahoga County Juvenile Court's Detention Center. If the alleged juvenile offender was not to be detained, he or she was transported home.

During the first phase of a pilot project, the Juvenile Court's Detention Center booked alleged juvenile offenders arrested in Cleveland's Second and Fourth Districts. Now, all alleged juvenile offenders arrested by Cleveland Police are taken directly to the Juvenile Court Detention Center for booking. The alleged juvenile offenders who meet the Court's admissions criteria are detained. Those who do not, are transported home from the Detention Center.

This new process:

- 1) Restructures the booking process for alleged juvenile offenders, including alleged violent gang offenders;
- 2) Separates alleged juvenile offenders from violent adult offenders-ending the process of exposing juveniles to adults in the Justice Center's common booking area;



# DETENTION SERVICES

## BOOKING PROCESS FOR CLEVELAND POLICE DISTRICTS (continued)

- 3) Reduces the time alleged juvenile offenders are in police custody;
- 4) Decreases unnecessary transportation by law enforcement;
- 5) Enables Cleveland Police Officers to return to duty more quickly.

During 2016, 622 alleged juvenile offenders were booked at the Cuyahoga County Juvenile Detention Center.

## OHIO ADMINISTRATIVE CODE STANDARD INSPECTION

The Ohio Department of Youth Services (ODYS) completed a facility inspection on November 7, and 8, 2016. The audit included the ODYS inspector touring the facility. The tour also included viewing support areas (housekeeping, food, school, and medical services) to better understand the overall operation and programming of the facility. Much of the time was also spent interviewing staff and residents and reviewing documentation that demonstrated compliance with Ohio Administrative Code standards. The practices of the Cuyahoga County Juvenile Detention Center were 100% compliant with Ohio Administrative Code Chapter 5139-37.

## VOLUNTEER SERVICES

A variety of community volunteers provide programming in the areas of life and social skills. Substance abuse awareness, health education, creative writing, cooking, arts and crafts, anger management, job readiness, social emotional learning, tutoring and hands on activities for residents continue to be instrumental in their mental and emotional development.

Community members, leaders and professionals, and athletes, give motivational presentations and entertainers present plays throughout the year. Community organizations provide after-school tutoring to help residents improve their educational development.

Before volunteers and college interns can work with residents, they must be cleared through criminal background checks.

### Youth Program Highlights

- Under the supervision of a Board Certified Music Therapist, students in the Music Therapy program at **Cleveland State University** and **Baldwin-Wallace University** provided volunteer music therapy activities

# DETENTION SERVICES

## VOLUNTEER SERVICES (continued)

- **STEM** (Science, Technology, Engineering and Math) activity after school sessions facilitated by the members of the **Cleveland Federal Community Leadership Institute (CFCLI)** an intergovernmental, community-based leadership development program for Federal employees
- **Construction Employers Association** sponsored “Career Day” to promote jobs and trades and apprenticeship programs within the construction industry
- **John Carroll University’s** Carroll Ballers program, **Zanzibar Soul Fusion Restaurant**, **St. Adalbert Catholic Church**, **Olivet Institutional Baptist Church** and **Religious Services** volunteers sponsored **Thanksgiving Dinner** for youth and staff
- **Religious Services Annual Residents’ Christmas Dinner** sponsored by **Inner-City Church** and **Blessed Hope Missionary Baptist Church** served home-cooked meals
- **Good Friday Worship Services** sponsored by **Elizabeth Baptist Church & Bethany Baptist Church**
- **Recovery Resources** weekly sessions on gambling awareness and recovery tips
- **Golden Ciphers, Inc.** focuses on rite of passage principles, cultural awareness and life skills
- **Substance abuse awareness** provided by **Northern Ohio Recovery Association, Inc. (NORA)**
- **True Freedom Ministries** sponsors three part-time chaplains to provide spiritual counseling and worship services
- **OSU Extension 4H Club**, **Robin Stone**, **Extension Educator** assisted our female youth in designing floral arrangements; flower bouquets donated by **Heinens Grocery**
- **Center for Service and Social Action (CSSA)** at **John Carroll University** students facilitate creative writing projects; intro to poetry and authors
- **CWRU Health Education** focused on awareness and prevention of STD’s
- **Trauma Informed Yoga** specialized yoga sessions for male and female residents
- **Game Day** hosted by **John Carroll University** students
- **Case Western Reserve University (CWRU) Street Law** focuses on Juvenile law
- **Mom’s First Program** offers support for teen mothers

# DETENTION SERVICES

## VOLUNTEER SERVICES (continued)

### Volunteer Services Speaker Series

- **Cleveland Public Theatre & Y-Haven Transitional Housing** presented “**Reaching BACK**” a special performance by **Y-Haven** residents. “**Reaching Back**”, a powerful original story that explores the risks and rewards of leaving the past behind, and the wisdom to be earned by moving forward
- **Bill Glass “Behind The Walls” Champions for Life** prison ministry
- Juvenile Detention Center received generous donations from **Cleveland Public Library** (main branch) **Kid’s Book Bank** and the **Guardian Ad Litem (GAL) project**
- **Motivational Speakers-Stephen Jamal Boyd and team** provided inspirational messages of hope
- **The Pastor Sal Perez Story: Someone Saved My Life Tonight**, a play depicting the life of a former gang member who became a pastor and recording artist
- **Black United Students, Kent State University** panel discussion-benefits of college education; campus life; overcoming obstacles

### Summer Enrichment Program (Enhance youths’ artistic, life and social skills)

- **A Vision of Change, Inc.** –Spelling, math sentence building; coping skills; making better choices; Respect for self and others; All about a Healthy Me and Windercise Fitness Program
- **Gloree Girls**-Social competence skill-building workshop
- **Center for Arts-Inspired Learning**-visual arts, drumming & literacy artists, theatrical workshop

### General

- Conducted tours for participants of the **1st Annual Sheriff’s Department Citizens Academy**; and attendees of the **American Probation & Parole Association** conference held in Cleveland, Ohio



# PROBATION SERVICES

## PROBATION INVESTIGATION

Probation investigation is responsible for conducting an initial risk assessment called the Ohio Youth Assessment System (OYAS), which measures the youth's risk level in addition to preparing a report for the jurist that includes previous charges, family history, school performance, mental health, and substance abuse issues. Investigative Probation Officers also make recommendations for various assessments to evaluate specific issues, such as substance abuse, mental health, and sex offending behavior. The Investigative Probation Officer then writes a report detailing all of the collected information and presents a carefully considered recommendation to the jurist that weighs the Court's mission to both protect the community and rehabilitate offenders. The Probation Department has two investigative probation units: Central Probation Investigations and Special Services Investigations.

## PROBATION SUPERVISION

Cuyahoga County Juvenile Court has five probation supervision units. Supervisory Probation Officers are responsible for the ongoing monitoring of youth in the community. Supervisory Probation Officers conduct assessments and develop case plans with youth and families designed to lower the youth's risk to reoffend. Probation Officers are well trained in the use of Effective Practice in Community Supervision (EPICS) and Motivational Interviewing (MI) to engage youths and families. Probation Officers participate in a variety of activities with youth and families, including home visits, school visits, court hearings, and community and collateral contacts. Additionally, Probation Officers work closely with school officials, law enforcement, and community stakeholders to not only address problems and concerns, but to also link families to their neighborhood and community to foster positive relationships. The Ohio Youth Assessment System (OYAS) is also utilized in supervision to track progress and reassess case planning needs. Probation Officers use a variety of graduated sanctions and rewards aimed at encouraging positive behavior and correcting negative behavior. The overarching goal of community supervision is to provide interventions that identify and develop youth and family strengths while building supports to sustain and support positive change.

# PROBATION SERVICES

## PROBATION SUPPORT SERVICES

The essential purpose of this unit is to provide support to families and youth being placed on probation. This unit is responsible for assisting court room staff, including the jurist, probation officers, and youth, along with their families, to ensure accurate interpretation of the Court's probation orders. Youth who are adjudicated as delinquents for committing a felony offense are required to submit DNA samples; this unit submits those samples to the Ohio Bureau of Criminal Identification and Investigation. When a youth is committed to ODYS, this unit will interview the youth's family, prepare the required documents, and facilitate the approval process for the youth's admission and transportation. Any youth placed on probation who may reside in another state is subject to Interstate Compact regulations; the Probation Support Services Unit oversees the procedures that regulate the movement of juveniles needing community and legal supervision across state lines for Cuyahoga County Juvenile Court. The unit provides customer service and probation information for incoming calls through the court's general phone line. Social history records are created, maintained, and tracked for accountability within the unit. It is also the responsibility of this unit to destroy records based on sealing and expungement requests or reaching the age of majority.

## OHIO YOUTH ASSESSMENT SYSTEM (OYAS)

The OYAS is an Ohio-specific juvenile justice assessment system developed by the Ohio Department of Youth Services, the University of Cincinnati, Ohio juvenile courts, community corrections facilities, and other community programs. The development of this instrument was based on the need to create a risk/needs assessment that provided the juvenile justice system with a standardized process of evaluating the criminogenic needs and risks of the youth. The OYAS contains five assessment tools: Diversion, Detention, Disposition, Residential, and Re-entry. While the tools give an overall picture of risk to reoffend, the disposition tool also determines the areas that present the greatest risk and are the best predictors of further delinquency. The OYAS give probation staff the ability to focus interventions on areas of highest risk, such as: family and living arrangements, peers and social support networks, education and employment, pro-social skills, substance abuse/mental health, and personality and criminal values, beliefs, and attitudes.

# PROBATION SERVICES

## EFFECTIVE PRACTICE IN COMMUNITY SUPERVISION (EPICS)

The Court's Probation Officers utilize EPICS in all of their interactions with youth and their families. EPICS is a research-based model that combines intervention strategies with community supervision. The purpose of EPICS is to structure visits with youth in a way that ensure the application of principles of effective intervention in our community supervision practices. The model is designed to use a combination of monitoring, referrals, and fact to face interactions to provide the youth with the correct dosage of treatment according to risk level and make the best possible use of time to develop a collaborative working relationship. Cuyahoga County Juvenile Probation Staff completed EPICS training in 2011 and have fully implemented the model into their daily practice. In 2012, selected employees were trained by the University of Cincinnati to become trainers in the model, and staff that were already trained continue to have refreshers to ensure our fidelity to the model.

## MOTIVATIONAL INTERVIEWING (MI)

Motivational Interviewing (MI) is an evidence-based treatment that addresses ambivalence to change. It is a conversational approach designed to help people identify their readiness, willingness, and ability to change and to make use of their own change-talk. MI is a core component of evidence-based practices, and emerging best practices in criminal justice. MI is a firm, fair, and consistent stance where probation officers work to form a positive, collaborative relationship with their clients while also holding them accountable. All probation officers were trained in MI in 2015. MI works well with EPICS as a client's willingness to change increases; the EPICS model provides them the tools and skills to do so.

## SPECIALIZED DOCKETS

During 2016, the court continued its specialized docket-Juvenile Drug Court, Family Drug Court, Mental Health Court and Re-entry Court. The Juvenile Drug Court and Mental Health Court were certified by the Supreme Court, and the Court is preparing for the Certification of the Family Drug Court in 2017.

**Juvenile Drug Court** received final certification pursuant to Sup. R. 36.26. On December 11, 2015 through December 31, 2018 and was also awarded a grant from SAMHSA to enhance services, and evaluate the success of the program. The value of specialized dockets to families involved in the court system is the ability of the court to focus on the special needs of the populations served. **Juvenile Drug Court** requires participants to attend regularly scheduled Court hearings, attend treatment, meet with a case manager multiple times a week, and submit

# PROBATION SERVICES

## SPECIALIZED DOCKETS (continued)

to random drug screens. Graduated rewards and sanctions are utilized as juveniles move through the multiple phases of the program.

The **Family Drug Court** operates similarly to the **Juvenile Drug Court**, but the participants are parents whose children are alleged to be abused, neglected or dependent and who are at risk of losing custody of their children because of drug dependency. The intensive program is designed to reduce the time that a child may have to spend in placement while the parent receives treatment for their substance abuse addiction.

The **Mental Health Court Phoenix Court** focuses on youth who, if not for their mental health status, would most likely not be involved in the court system. Through collaboration with the Cuyahoga County Tapestry System of Care and PEP Connections, the youth and families involved in this docket are able to receive community-based supports that enable them to stay in their homes, address their mental health issues, and reduce the possibility of further Court involvement.

The **Re-entry Court** is designed to address the needs of youth returning to the community from Ohio Department of Youth Services (ODYS) institutions. Identified youth who are at high risk for further delinquent activity are selected. The specialized docket provides needed support and intensive supervision through joint efforts with ODYS and other county agencies for youth and families. Education, employment, and life skills opportunities are provided in an effort to maintain youth safely in their communities. Juvenile Court and Ohio Department of Youth Services (ODYS) have teamed up with community partners such as Alcohol Drug Addiction and Mental Health Services (ADAMHS), Catholic Charities, and Cleveland Municipal School District (CMSD) to form the Juvenile Court Judicial Release Committee.

The committee reviews cases of youth who have reached their midpoint of their ODYS sentence. Qualifying youth who have demonstrated positive change and program engagement while in DYS will have the opportunity to be reviewed by the committee and the potential to earn a recommendation to be released back to the community under supervision.

The committee only provides a recommendation to the committing Jurist. If the Jurist accepts the recommendation, upon release the youth and family are expected to participate in Parole services such as Re-entry Court, counseling, educational and/or vocational programming.

# PROBATION SERVICES

## COMMUNITY SERVICE/RESTITUTION PROGRAM

Developed in 1986, the Cuyahoga County Juvenile Court's Community Service/Restitution Program was designed to provide positive sanctions and to give youth an opportunity to make amends for harm done to victims and the community. The program encourages juvenile probationers to take responsibility for their actions and can be used as a court-ordered dispositional alternative. The program has job sites located throughout the county to which probationers are assigned. Sites include nursing homes, churches, food banks, community gardens, neighborhood recreation centers and more.

Since 2013, the Community Service Program has collaborated with Fairfax Renaissance Development Corporation and the Center for Arts Inspired Learning in helping with the restorative efforts of our youth in the city of Cleveland. The following restorative projects have been completed by community service youth; Quincy Avenue Reading Garden and the Little Red Library at the site of Langston Hughes' childhood home in Fairfax, and the design and creation of "Rust Belt Hope" a Mural that symbolizes the empowerment of the inner city youth, who embrace the hope of the city's future in their hands.

Every Saturday an average of 30 youth participate in community service activities. In 2015, there were 38,901 community service hours completed by juvenile probationers in Cuyahoga County, and the average number of community service hours per youth was 40 hours.

In 2006, the Court's Victims Assistance Restitution Program was implemented that allows youth who owe restitution to earn up to \$400 by completing community service hours through the Community Service Program. This gives the youth the opportunity to pay back all or a portion of what they owe to the victim. The program has been successful in collecting a total of \$39,227 in 2016.





# PROBATION SERVICES

## MULTI-SYSTEMIC THERAPY PROGRAM (MST)

The Cuyahoga County Juvenile Court Multi-Systemic Therapy Program has been in existence for over 13 years. The program employs eight therapists and one manager. The program serves 120 youth and families per year. The MST Program is unique, goal oriented, comprehensive treatment program designed to serve youth with multiple problems in their communities. MST is a community based treatment program that has been cost effective for youth with complex emotional, social and academic needs.

MST utilizes a home-based model whereby therapists provide intensive services within the family's ecology including the home, school and community. Therapists are available 24-hours -per-day, seven-days-a-week. Each Therapist has a case load size of 4-6 families to allow for the necessary intensity. The average length of treatment is between 3-5 months.

Each MST team has a supervisor and an expert consultant from the Center for Innovative Practice who consults weekly on all cases. MST is effective in reducing anti-social behaviors and recidivism. The MST model increases parenting skills and improves school behaviors by limiting truancy and academic problems. It assists in reducing criminal behavior as well as substance abuse and association with negative peers.

MST provides youth/families with a complete assessment of the youth with emphasis placed on their family system, school and community. The MST therapist focuses on understanding the "fit" of the child's/family's issues and how to best resolve them. In addition, MST focuses on assisting parents in building support systems and social networks within their community and empowers them to address their family's needs more effectively. A heavy emphasis is placed on ensuring the family's ability to sustain the positive changes and avoid recidivism once the therapy has ended.



# PROBATION SERVICES

## PLACEMENT PLANNING DAY REPORT

Placement Planning Day Report Center is an alternative to being placed in the Detention Center or Shelter Care for youth who have been identified as placement risks or during the placement determination process. This program is designed to give youth a chance to develop skills to stay in the community, which can result in the youth being diverted from residential placement or decreasing the youth's stay in the residential placement.

Working in partnership with the Applewood Centers, male youth on probation report six (6) days a week from 8:00am-8:00pm. During the day-long program, the youth receive a full psycho-social assessment and an Individualized Treatment Plan (ITP) to define individualized goals and strategies to reach these goals. At a minimum, the youth receive group counseling, individual counseling, case management, and family therapy. Placement Planning Day Report Center (PPDRC) also provides educational services on site and structured recreation activities.

Since the program's inception in July of 2012, PPDRC has served 350 youth, and of these 350 youth, 233, or 67%, remained in the community. The youth who were placed in residential placement had a successful placement completion rate of 81%. In 2014, PPDRC served a total of 156 youth, with 92 youth, or 59%, not being placed in residential placement upon their termination.

## PLACEMENT AFTERCARE

Residential Placement is out-of-home therapeutic placement for youth needing the most intensive level of services. All of the facilities used by the Court are licensed by the State of Ohio and are staff secure, providing intensive counseling and supervision 24-hours-a-day, 7-days-a-week. Youth placed in residential treatment are typically youth who have not adjusted well to community-based services. Removing a youth from his/her home is always a difficult decision. The Court's goal is to work with youth and their families in the least restrictive environment and to only place a youth out of home after community-based resources have been exhausted. Services in placement include, but are not limited to:

- Individual, group, anger management, sex offender, chemical dependency, and family counseling.
- Mental health care, psychological and psychiatric evaluations and monitoring.
- Medication evaluation and monitoring.
- Educational services including special education, GED preparation & vocational education.

# PROBATION SERVICES

## PLACEMENT AFTERCARE (continued)

Upon discharge, the youth and family are provided with Court Aftercare supervision. Aftercare supervision is an intensive level of supervision that gradually gives the youth more freedom and responsibility. Aftercare planning starts even before the youth is placed. During the early part of Aftercare, the youth and family have weekly contact with a Court Placement Aftercare Coordinator and are also involved with other specialized counseling specific to the needs of the youth and family. By the end of Aftercare, contact with Court and system representatives is monthly, and the family and youth have built community supports and resources outside of the system. The hope is that these new supports and resources will prevent further system involvement in the future.

## SCHOOL BASED PROBATION

In May 2003, the Court received a Project Neighborhood Safe Grant through the U.S. Bureau of Justice Assistance, in conjunction with Ohio Criminal Justice Services, to fund a School-based Probation Violent Offender Project. The project involved a collaborative effort with the Cleveland Municipal School District (CMSD), the Cleveland Police Department's 1st and 6th Districts, and the Cuyahoga County Juvenile Court. The project continues to be sustained by RECLAIM Ohio funding due to the success of the program. The Probation Department has placed School-based Liaisons (SBL) in the following CMSD High Schools: Glenville, John Marshall, East Tech, and John F. Kennedy. The Cleveland Heights/University Heights District, recognizing the value of the project, provided funding in 2010 to place an officer in Cleveland Heights High and continues to do so today. In 2015, the Positive Education Program (PEP) approached the court to have an officer placed in their district (PEP Ireland & Eastwood), and also provides financial support for the position. The intent is to provide intensive probation supervision within the immediate environment of juvenile offenders attending these schools, while sharing information with school and law enforcement officials. Probationers are seen on a daily basis. With a goal of increasing parental involvement, the SBL will participate in probationers' Individualized Educational Plans and Individual Behavioral Plans. The SBL may become involved with school social workers in pro-social skill group sessions. The expectation is to reduce recidivism, reduce truancy, and assist youth in developing positive pro-social skill behavior. SBLs work closely with the Cleveland Police Department, especially with respect to youth-at-risk and youth absconding. Probation Staff received special training in order to work effectively in this collaborative Project Safe Neighborhood endeavor.

# PROBATION SERVICES

## BEHAVIORAL HEALTH JUVENILE JUSTICE (BHJJ)

In the Spring of 2006, the Court and its systems partners, the Cuyahoga County Community Mental Health Board, the Alcohol and Drug Addiction Services Board of Cuyahoga County (now the ADAHMS Board), and the Family and Children First Council, were awarded a grant by the State of Ohio to provide intensive services to female offenders with concurrent mental illness and substance abuse diagnoses. In 2009, the program was expanded to serve males.

The program continues its success as just six youth involved have been committed to the Ohio Department of Youth Services (ODYS) while involved with BHJJ. The BHJJ program is designed to divert youth from local and state detention centers into a more comprehensive, community based mental and behavioral health treatment. Services include: Assessment, Wraparound Case Management, Intensive Probation Services, a designated Crisis/Stabilization bed and evidence based in-home therapy, such as, Multi-Systemic Therapy (MST) and In-Home Integrated Co-occurring Treatment (ITC). Court Placement Aftercare Coordinators and Court Care Coordinators work as a team to provide an intensive level of Court supervision for these offenders. The average length of treatment is 6-9 months.

## COGNITIVE BEHAVIORAL THERAPY CENTER

The Cognitive Behavioral Therapy program (CBT) is an evidenced based, intensive, day treatment program. This program has been successful in assisting youth who exhibit criminogenic behaviors to make pro social choices and reduce recidivism.

The CBT program is based on the curriculum *Thinking for a Change*. The two distinct parts of the curriculum are cognitive restructuring and social skill interventions, which build upon one another and lay the foundation for problem solving. The program can vary in length depending on the youth's participation, so it can take from 8-10 weeks to complete.

The CBT program is designed to target youth who are assessed to be moderate to high risk. The program addresses the criminogenic thinking patterns/behaviors that have impacted the youth's abilities to function as a productive part of society. The CBT program has partnered with the Board of Health in presenting the Personal Responsibility Education Program (PREP) and the Center for Arts Inspires Learning to produce works of poetry as a way for youth to creatively express their thoughts and feelings.

# COURT OPERATIONS

## COURT OPERATIONS DIVISION

The Court Operations Division consists of Detention Services, Information Services, Court Magistrates and the Court Appointed Special Advocate (CASA) Program.

## CASA OF CUYAHOGA COUNTY

Court Appointed Special Advocates (CASA) of Cuyahoga County is a new court program commenced in 2015, joining the almost 1,000 local CASA programs in 49 states across the US. The mission is to provide qualified, trained, and supervised community volunteers to advocate for the best interests of abused, neglected, and dependent children in the juvenile court system.

CASA's unique vision empowers volunteer advocates to provide children a voice in the courtroom and in their community. After a lengthy screening and training process, CASA volunteers investigate the circumstances surrounding their assigned child, including their current placement, and any necessary services. As parties to the case, CASA volunteers then make objective fact-based recommendations to the court regarding the child's best interest.

Over 300 community members expressed interest in this opportunity. From January 1, 2016 through August 31, 2016, 57 members of the community completed training and were added to the program as qualified volunteers. Pre-service training sessions were conducted in April and August. During the first eight months of 2016, CASA volunteers served 98 children in abuse, neglect and dependency cases wherein in the prayers for relief in the complaint filed by the Cuyahoga County Division of Children and Family Services sought orders of protective supervision. During the time frame, the cases of 12 of the 98 children served were resolved and closed.

On May 11, 2016, CASA of Cuyahoga County transitioned to become a 501(c)(3) organization. What was originally CASA of Cuyahoga County, a Juvenile Court program, is now part of a non-profit organization, known as Children and Family Advocates of Cuyahoga County (CFACC).



# COURT OPERATIONS

## BOOKING PROCESS FOR CLEVELAND POLICE DISTRICTS

In 2016, the Juvenile Court began the centralized booking of juveniles arrested by the Cleveland Police. The effort restructures how alleged juvenile offenders arrested by the Cleveland Police are processed and booked after an arrest, something that will permit officers to return to patrolling more quickly. Prior to the change in the process, the alleged juvenile offender was transported from the scene of the offense to the local Cleveland Police District Headquarters. The alleged juvenile offender was then transported downtown to the Justice Center for booking at the Cleveland City Jail, where conditions are not appropriate for minors. If the determination was made that the alleged juvenile offender was to be detained, he or she was transported to the Cuyahoga County Juvenile Court's Detention Center. If the alleged juvenile offender was not to be detained, he or she was transported home.

During the first phase of a pilot project, the Juvenile Court's Detention Center booked alleged juvenile offenders arrested in Cleveland's Second and Fourth Districts. Now, all alleged juvenile offenders arrested by Cleveland Police are taken directly to the Juvenile Court Detention Center for booking. The alleged juvenile offenders who meet the Court's admission criteria are detained. Those who do not, are transported home from the Detention Center.

This new process:

- 1) Restructures the booking process for alleged juvenile offenders, including alleged violent gang offenders;
- 2) Separates alleged juvenile offenders from violent adult offenders-ending the process of exposing juveniles to adults in the Justice Center's common booking area;
- 3) Reduces the time alleged juvenile offenders are in police custody;
- 4) Decreases unnecessary transportation by law enforcement;
- 5) Enables Cleveland Police Officers to return to duty more quickly.

During 2016, 622 alleged juvenile offenders were booked at the Cuyahoga County Juvenile Detention Center.

# COURT OPERATIONS

## JUVENILE DETENTION ALTERNATIVES INITIATIVE (JDAI)

2016 was an active year for the Juvenile Court's Juvenile Detention Alternatives Initiative (JDAI). Several efforts that required long-term planning came to fruition in 2016. As an example, the JDAI Facility Assessment conducted in 2014 identified the need to improve mental health services in Detention Center, and in partnership with the Alcohol Drug Addiction and Mental Health Services Board, the new vendor, Applewood Centers, Inc., began providing these services in 2016. Each Housing (living unit) in the Juvenile Court's Detention Center is assigned its own mental health therapist, with the goal of seeing any youth whose stay lasts longer than 48 hours. The therapists report that in any given month, 45% to 78% of the youth have severe mental health issues, such as depression or anxiety. The therapists not only see residents individually as needed, but also conduct psychoeducational groups designed to teach coping skills. There is now a protocol in place for youth who have trouble sleeping so that this issue can be addressed consistently.

To respond to the need for more large-muscle activities and for a wider variety of coping skills, JDAI provided training for three individuals to learn trauma-informed yoga techniques. From July through December, sessions were delivered every other Saturday morning, with attendance of 283 participants over this period! The residents reported feeling calmer after participating in these sessions. The sessions are continuing in 2017 as we look to offer a greater number of classes.

'Think Trauma' training was conducted in the Detention Center for House 5 detention officers, in a series of three sessions. This particular training was conducted in partnership with the Court's Program, Training and Quality Assurance (PTQA) unit. Sessions covered self-care, a trauma overview and strategies for assisting residents who may be experiencing trauma.

Outside the Detention Center, we continued to provide Probation orientation sessions through the Youth Advisory Council (YAC). Youth who successfully completed Probation can join the YAC, which conducts these orientation sessions each month for groups of new probationers and their parents. The Youth Advisory Council provides a great opportunity for its members to learn leadership and group presentation skills; in fact, one long-term participant graduated and entered the Armed Services. New hires to the Probation Department also participate as part of their training. Community service and gun violence awareness components were added to the orientation this year, with plans to enhance the initiative with a jobs component in 2017.

# COURT OPERATIONS

## JUVENILE DETENTION ALTERNATIVES INITIATIVE (JDAI) (continued)

As one of the alternative to detention, the domestic violence program Coordinated Approach to Low-Risk Misdemeanors (CALM), expand into the Fifth Police District with additional Title II funding. As part of the expansion, Court staff presented information about the program at police roll calls in the early morning, afternoon and evening. The program provides assessments of youths who come to the attention of the Police in the Fourth and Fifth Districts because of domestic violence allegations, a brief stay in respite services and short-term case management to link families with community-based services, in lieu of a stay in the Detention Center. To date, 62 low-risk youth have avoided being placed in the Detention Center and have been diverted from official case processing.

To integrate the concepts of JDAI into police work, the Court's JDAI Coordinator was invited to participate in a series of training sessions for the Cleveland Division of Police. These sessions were conducted at Cuyahoga Community College over a three month period in 2016. Officers learned about the effects of detainment on lower risk youth and the options that the Court is working to develop to prevent stays in the Detention Center for these youths.

On the horizon for JDAI is an initiative regarding racial and ethnic disparity. In 2016, a team was formed with Court staff and community representation and the team attended preliminary training provided by the Burns Institute, sponsored by the Annie E. Casey Foundation. At the training, the group identified as its initial priority the need to reach out to the community to find new ways to work together to service youth.

## INFORMATION SERVICES (IS)

Approximately 550 court staff are provided training and direct desktop and network support by Information Services' staff. Standard and ad hoc data and statistical reports are also produced.

Information Services continues to provide ongoing iCase support to users via the iCase Help Desk. In addition, on-site iCase training is provided to police and other outside agencies, utilizing the court's new training facility located within the Juvenile Justice Center.

Information Services personnel evaluate opportunities for technologies that expand the capacity of the Court's Information system. Efforts are constantly made to deliver information to decision makers at critical events. Staff closely monitor system performance and are quick to intervene when events occur that are outside the established performance measures.



# LEGAL DIVISION

## LEGAL DIVISION

The Legal Division, led by the Court's Legal Counsel, is responsible for all legal and clerking functions and other activities necessary to ensure that court hearing processes are executed in a timely, economical, and all-inclusive manner. It consists of the Clerk of Court, the Intake and Diversion Unit, the child support, traffic, and arraignment docket Magistrates, a Media Specialist, and a Staff Attorney.

## INTAKE AND DIVERSION UNIT

In 2016, the Intake and Diversion Unit added another new entity to the Minor Misdemeanor Citation Project (MMCP). Cleveland Municipal School District (CMSD) is the second entity to take part in the Juvenile Court's MMCP, joining the City of Lakewood. The MMCP was implemented to make minor misdemeanor cases easier for Police Departments to submit to the Court. The citation issued by the police serves as the Juvenile Court Fact sheet, incident report and complaint, making it simpler for police departments to submit these low levels offenses to the Court. It is the Intake Department's hope to add more new suburbs in 2017.

In conjunction with the Cuyahoga County Prosecutor's Office, the Intake and Diversion Unit of Juvenile Court has added a new 'Sexting Program' to their repertoire of diversion options. The Sexting Program, overseen by the Court, but administered by the County Prosecutor's Office gives sexting offenders the opportunity to have their cases diverted to one of the Court's Community Diversion Programs (CDP's). Alleged offenders are sanctioned to attend this new Sexting Program, offered every other month. The program encompasses several educational components of sexting, including online dangers, internet crimes, and legal ramifications. There have been 3 sessions thus far which have been well attended and which have generated significant and thought-provoking conversation.

## CLERK'S OFFICE

The Clerk's Office mission statement is to diligently perform all duties with integrity and professionalism at all times; to provide excellent customer service, and continuously pursue methods to maximize efficiencies while processing filings, accessing Information, and providing assistance to all.

The Clerk's Office has been seeking way to achieve significant savings and improve efficiencies through electronic certified/return receipt mailings. On October 13, 2016, the court accomplished this goal and anticipates the following benefits:

## LEGAL DIVISION

### CLERK'S OFFICE (continued)

- Automate return receipt process
- Eliminate the need to scan and image the returned green cards received from the United State Postal Service (USPS)
- Reduction in turnaround time receiving certified mail returns
- Reallocation of staff in the Clerk's Office to perform other duties
- Reduction in annual postage expenditures for certified return receipt
- Eliminate the need to use expensive envelopes; thereby producing a reduction in cost for envelopes;
- Overall, reduction in continuances granted by the court due to delays in receiving returned service mail from the USPS.

On March 22, 2016, the Clerk's Office began providing notary services to customers. Many times customers would leave the building in search of notary service, which caused a huge inconvenience when filing their documents. Providing this service has enhanced customer service and thus far has been successful.

The cashier's office continues to provide a convenient and alternative location for obligors to have the ability to make payments before or after attending court hearings. The child support payments are dispersed within a few days to the families and children, which has been an ongoing successful effort.

On January 8, 2016, the court began the Warrant Recall Friday Program, which is a program designed to provide individuals with child support warrants an opportunity to pay \$50 to appear before a magistrate or judge to have their warrant recalled. A hearing may be conducted on the same day or continue to another date. The funds paid are applied towards their child support arrearages and their families receive the payment within a few days.

On July 15, 2016, this program was moved to the Clerk's Office and individuals start their process at the front counter.

In the future, the Clerk's Office will begin to send out journal entries electronically to agencies and attorneys. This new practice will provide savings on the cost of paper, postage, envelopes and staffing. To further enhance efficiencies, the Clerk's Office will diligently pursue a method to accept electronic filings and on-line credit card payments.

# 2016 STATISTICS DIRECTORY

## TABLE 1: INTAKE & DIVERSION ACTIVITY PAGES 36-37

|                              |                             |
|------------------------------|-----------------------------|
| Delinquency and Unruly       | Custody                     |
| Individual Offenders         | Parent-Child Relationship   |
| Traffic                      | Support                     |
| Individual Traffic Offenders | Family                      |
| Abuse, Dependency, Neglect   | Interstate Compact          |
| Adult Cases                  | Community Diversion Program |

## TABLE 2: JUVENILES WITH DELINQUENCY OR UNRULY DISPOSITIONS (BY AGE, RACE, & GENDER)

### PAGE 38

## TABLE 3: DISPOSITIONS IN OFFICIAL CASES

### PAGES 39-42

|  |   |
|--|---|
| Probation Services                                   | Dispositions in Adult Cases                     |
| Commitments  | Dispositions in Parent-Child Relationship Cases |
| Placements   | Dispositions in Traffic Cases                   |
| Bindovers  | Dispositions in Custody Cases                   |
| Other Dispositions                                   | Dispositions in Support Cases                   |
| Dispositions in Abuse, Dependency, and Neglect Cases |   |

## TABLE 4: DELINQUENCY AND UNRULY JUVENILES, CASES, AND

### CHARGES (BY AREA OF RESIDENCE )

### PAGES 43-46

|                   |         |
|-------------------|---------|
| City of Cleveland | Suburbs |
|-------------------|---------|

## TABLE 5: OFFICIAL AND BYPASSED CHARGES IN DELINQUENCY AND UNRULY CASES

### PAGE 47

|                   |                       |
|-------------------|-----------------------|
| Person Offenses   | Public Order Offenses |
| Property Offenses | Unruly Offenses       |
| Drug Offenses     | Other Offenses        |

## TABLE 6: DETENTION SERVICES POPULATION

### PAGE 48

## TABLE 7: AGE AT FILING

### PAGE 49

## TABLE 8: 2016 OHIO DEPARTMENT OF YOUTH SERVICES (ODYS) INSTITUTIONAL POPULATION

### PAGE 50

## Table 1: Intake & Diversion Activity

### DELINQUENCY AND UNRULY

|  | Male          | Female       | Total         |
|--|---------------|--------------|---------------|
| OFFICIAL Delinquency Cases:                  | 4,025         | 1,381        | 5,406         |
| BYPASSED Delinquency Cases:                  | 375           | 180          | 555           |
| <b>TOTAL Delinquency Cases:</b>              | <b>4,400</b>  | <b>1,561</b> | <b>5,961</b>  |
| <b>TOTAL Delinquency Charges:</b>            | <b>10,977</b> | <b>2,850</b> | <b>13,827</b> |
| OFFICIAL Unruly Cases:                       | 419           | 337          | 756           |
| BYPASSED Unruly Cases:                       | 454           | 430          | 884           |
| <b>TOTAL UNRULY Cases:</b>                   | <b>873</b>    | <b>767</b>   | <b>1,640</b>  |
| <b>TOTAL Unruly Charges:</b>                 | <b>880</b>    | <b>772</b>   | <b>1,652</b>  |
| <b>TOTAL Delinquency and Unruly Cases:</b>   | <b>5,273</b>  | <b>2,328</b> | <b>7,601</b>  |
| <b>TOTAL Delinquency and Unruly Charges:</b> | <b>11,857</b> | <b>3,622</b> | <b>15,479</b> |

### INDIVIDUAL OFFENDERS

|          |       |       |       |
|----------|-------|-------|-------|
| Black    | 2,123 | 1,151 | 3,274 |
| White    | 727   | 409   | 1,136 |
| Hispanic | 105   | 55    | 160   |
| Asian    | 8     | 8     | 16    |
| Other    | 44    | 42    | 86    |
| Unknown  | 5     | 6     | 11    |

**TOTAL Individual Offenders:** 3,012 Male, 1,671 Female, 4,683 Total

### TRAFFIC

|                         | Male  | Female | Total |
|-------------------------|-------|--------|-------|
| OFFICIAL Traffic Cases: | 1,927 | 1,200  | 3,127 |

### INDIVIDUAL TRAFFIC OFFENDERS

|                                    |              |              |              |
|------------------------------------|--------------|--------------|--------------|
| Black                              | 506          | 294          | 800          |
| White                              | 1,081        | 724          | 1,805        |
| Hispanic                           | 32           | 13           | 45           |
| Asian                              | 22           | 16           | 38           |
| Other                              | 15           | 10           | 25           |
| Unknown                            | 28           | 27           | 55           |
| <b>TOTAL Individual Offenders:</b> | <b>1,684</b> | <b>1,084</b> | <b>2,768</b> |

A CASE is a single unit of action identified by a file number in which a number of separate CHARGES may be alleged.

## Table 1: Intake & Diversion Activity (continued)

|   |             |               | <i>Total</i>  |
|---|-------------|---------------|---------------|
| <b><u>ABUSE, DEPENDENCY, NEGLECT</u></b>                |             |               |               |
| OFFICIAL Abuse, Dependency, Neglect Cases:              |             |               | 2,186         |
| Abuse Charges:  |             | 645           |               |
| Dependency Charges:                                     |             | 1,175         |               |
| Neglect Charges:  |             | 1,564         |               |
| <b><i>TOTAL Abuse, Dependency, Neglect Charges:</i></b> |             | <b>3,384</b>  |               |
| <br><b><u>ADULT CASES</u></b>                           |             |               |               |
| OFFICIAL Adult Cases:                                   |             |               | 46            |
| <br><b><u>CUSTODY</u></b>                               |             |               |               |
| OFFICIAL Custody Cases:                                 |             |               | 1,522         |
| <br><b><u>PARENT CHILD RELATIONSHIP</u></b>             |             |               |               |
| OFFICIAL Parent Child Relationship:                     |             |               | 772           |
| <br><b><u>SUPPORT</u></b>                               |             |               |               |
| OFFICIAL Support Cases:                                 |             |               | 998           |
| <br><b><u>FAMILY</u></b>                                |             |               |               |
| OFFICIAL Family   |             |               | 32            |
| <br><b><u>INTERSTATE COMPACT</u></b>                    |             |               |               |
| <b><i>TOTAL—OFFICIAL AND BYPASSED CASES</i></b>         |             |               |               |
| OFFICIAL Cases:   |             |               | 14,845        |
| BYPASSED Cases:   |             |               | 1,439         |
| <b><i>TOTAL Official and Bypassed Cases:</i></b>        |             |               | <b>16,284</b> |
| <br><b><u>COMMUNITY DIVERSION PROGRAM *</u></b>         |             |               |               |
|   | <b>Male</b> | <b>Female</b> | <b>Total</b>  |
| Black   | 551         | 398           | 949           |
| White   | 386         | 320           | 706           |
| Hispanic  | 33          | 21            | 54            |
| Asian   | 6           | 2             | 8             |
| Other   | 6           | 17            | 23            |
| <b><i>TOTAL Individual Offenders</i></b>                | <b>982</b>  | <b>758</b>    | <b>1,740</b>  |
| <b><i>GRAND TOTAL -ALL CASES FILED</i></b>              |             |               | <b>18,024</b> |

## Table 2: Juveniles with Delinquency or Unruly Dispositions (By Age, Race and Gender)



|                                  |              | 8 and under | 9        | 10        | 11        | 12         | 13         | 14         | 15         | 16         | 17           | 18 and Over  | Total        |
|----------------------------------|--------------|-------------|----------|-----------|-----------|------------|------------|------------|------------|------------|--------------|--------------|--------------|
| No Race                          | Female       | 0           | 0        | 0         | 0         | 0          | 0          | 1          | 0          | 0          | 0            | 1            | 2            |
|                                  | Male         | 0           | 0        | 1         | 0         | 1          | 0          | 0          | 1          | 0          | 1            | 0            | 4            |
|                                  | <b>Total</b> | <b>0</b>    | <b>0</b> | <b>1</b>  | <b>0</b>  | <b>1</b>   | <b>0</b>   | <b>1</b>   | <b>1</b>   | <b>0</b>   | <b>1</b>     | <b>1</b>     | <b>6</b>     |
| American Indian or Alaska Native | Female       | 0           | 0        | 0         | 0         | 0          | 0          | 0          | 0          | 0          | 1            | 1            | 2            |
|                                  | Male         | 0           | 0        | 0         | 0         | 0          | 0          | 0          | 1          | 0          | 1            | 0            | 2            |
|                                  | <b>Total</b> | <b>0</b>    | <b>0</b> | <b>0</b>  | <b>0</b>  | <b>0</b>   | <b>0</b>   | <b>0</b>   | <b>1</b>   | <b>0</b>   | <b>2</b>     | <b>1</b>     | <b>4</b>     |
| Asian                            | Female       | 0           | 0        | 0         | 0         | 0          | 0          | 0          | 0          | 1          | 2            | 0            | 3            |
|                                  | Male         | 0           | 0        | 0         | 0         | 0          | 0          | 0          | 1          | 1          | 0            | 3            | 5            |
|                                  | <b>Total</b> | <b>0</b>    | <b>0</b> | <b>0</b>  | <b>0</b>  | <b>0</b>   | <b>0</b>   | <b>0</b>   | <b>1</b>   | <b>2</b>   | <b>2</b>     | <b>3</b>     | <b>8</b>     |
| Black or African American        | Female       | 0           | 2        | 1         | 2         | 11         | 43         | 68         | 99         | 141        | 133          | 389          | 889          |
|                                  | Male         | 0           | 2        | 3         | 8         | 27         | 63         | 118        | 237        | 324        | 330          | 965          | 2,077        |
|                                  | <b>Total</b> | <b>0</b>    | <b>4</b> | <b>4</b>  | <b>10</b> | <b>38</b>  | <b>106</b> | <b>186</b> | <b>336</b> | <b>465</b> | <b>463</b>   | <b>1,354</b> | <b>2,966</b> |
| Hispanic                         | Female       | 0           | 0        | 0         | 0         | 0          | 3          | 3          | 2          | 3          | 6            | 24           | 41           |
|                                  | Male         | 0           | 0        | 0         | 0         | 1          | 4          | 6          | 11         | 16         | 18           | 49           | 105          |
|                                  | <b>Total</b> | <b>0</b>    | <b>0</b> | <b>0</b>  | <b>0</b>  | <b>1</b>   | <b>7</b>   | <b>9</b>   | <b>13</b>  | <b>19</b>  | <b>24</b>    | <b>73</b>    | <b>146</b>   |
| Other                            | Female       | 0           | 0        | 0         | 0         | 0          | 0          | 2          | 8          | 1          | 5            | 5            | 21           |
|                                  | Male         | 0           | 0        | 0         | 0         | 2          | 3          | 5          | 4          | 3          | 7            | 4            | 28           |
|                                  | <b>Total</b> | <b>0</b>    | <b>0</b> | <b>0</b>  | <b>0</b>  | <b>2</b>   | <b>3</b>   | <b>7</b>   | <b>12</b>  | <b>4</b>   | <b>12</b>    | <b>9</b>     | <b>49</b>    |
| White                            | Female       | 0           | 0        | 0         | 1         | 2          | 15         | 21         | 28         | 50         | 55           | 105          | 277          |
|                                  | Male         | 0           | 0        | 0         | 2         | 10         | 21         | 39         | 51         | 82         | 123          | 241          | 569          |
|                                  | <b>Total</b> | <b>0</b>    | <b>0</b> | <b>0</b>  | <b>3</b>  | <b>12</b>  | <b>36</b>  | <b>60</b>  | <b>79</b>  | <b>132</b> | <b>178</b>   | <b>346</b>   | <b>846</b>   |
| <b>Total</b>                     | <b>0</b>     | <b>4</b>    | <b>5</b> | <b>13</b> | <b>54</b> | <b>152</b> | <b>263</b> | <b>443</b> | <b>622</b> | <b>682</b> | <b>1,787</b> | <b>4,025</b> |              |

Table 3: Dispositions in Official Cases

|                                     | Delinquency  |              |              | Unruly     |            |            | Total        |              |              |
|-------------------------------------|--------------|--------------|--------------|------------|------------|------------|--------------|--------------|--------------|
|                                     | Male         | Female       | Total        | Male       | Female     | Total      | Male         | Female       | Total        |
| <b>PROBATION SERVICES</b>           |              |              |              |            |            |            |              |              |              |
| ODYS Commitment Stayed              | 36           | 1            | 37           | 0          | 0          | 0          | 36           | 1            | 37           |
| ODYS Commitment Suspended           | 305          | 37           | 342          | 0          | 0          | 0          | 305          | 37           | 342          |
| HB400 Commitment Stayed             | 2            | 0            | 2            | 0          | 0          | 0          | 2            | 0            | 2            |
| HB400 Commitment Suspended          | 48           | 15           | 63           | 0          | 0          | 0          | 48           | 15           | 63           |
| <i>Total Stayed/Suspended</i>       | <b>391</b>   | <b>53</b>    | <b>444</b>   | <b>0</b>   | <b>0</b>   | <b>0</b>   | <b>391</b>   | <b>53</b>    | <b>444</b>   |
| Probation                           | 621          | 279          | 900          | 49         | 58         | 107        | 670          | 337          | 1,007        |
| Community Service                   | 227          | 60           | 287          | 6          | 4          | 10         | 233          | 64           | 297          |
| Restitution                         | 144          | 16           | 160          | 0          | 0          | 0          | 144          | 16           | 160          |
| <b>TOTAL PROBATION SERVICES</b>     | <b>1,383</b> | <b>408</b>   | <b>1,791</b> | <b>55</b>  | <b>62</b>  | <b>117</b> | <b>1,438</b> | <b>470</b>   | <b>1,908</b> |
| <b>COMMITMENTS</b>                  |              |              |              |            |            |            |              |              |              |
| ODYS                                | 155          | 8            | 163          | 0          | 0          | 0          | 155          | 8            | 163          |
| HB400                               | 64           | 7            | 71           | 0          | 1          | 1          | 64           | 8            | 72           |
| Return to ODYS                      | 9            | 0            | 9            | 0          | 0          | 0          | 9            | 0            | 9            |
| Return to Detention Center (HB400)  | 0            | 0            | 0            | 0          | 0          | 0          | 0            | 0            | 0            |
| <b>TOTAL COMMITMENTS</b>            | <b>228</b>   | <b>15</b>    | <b>243</b>   | <b>0</b>   | <b>1</b>   | <b>1</b>   | <b>228</b>   | <b>16</b>    | <b>244</b>   |
| <b>PLACEMENTS</b>                   |              |              |              |            |            |            |              |              |              |
| Private Placement                   | 79           | 10           | 89           | 1          | 1          | 2          | 80           | 11           | 91           |
| YFCP                                | 4            | 4            | 8            | 0          | 0          | 0          | 4            | 4            | 8            |
| Return to YFCP                      | 0            | 0            | 0            | 0          | 0          | 0          | 0            | 0            | 0            |
| <b>TOTAL PLACEMENTS</b>             | <b>83</b>    | <b>14</b>    | <b>97</b>    | <b>1</b>   | <b>1</b>   | <b>2</b>   | <b>84</b>    | <b>15</b>    | <b>99</b>    |
| <b>BINDOVERS</b>                    |              |              |              |            |            |            |              |              |              |
| Mandatory                           | 45           | 0            | 45           | 0          | 0          | 0          | 45           | 0            | 45           |
| Discretionary                       | 31           | 0            | 31           | 0          | 0          | 0          | 31           | 0            | 31           |
| <b>TOTAL BINDOVERS</b>              | <b>76</b>    | <b>0</b>     | <b>76</b>    | <b>0</b>   | <b>0</b>   | <b>0</b>   | <b>76</b>    | <b>0</b>     | <b>76</b>    |
| <b>OTHER DISPOSITIONS</b>           |              |              |              |            |            |            |              |              |              |
| Supervision of Parents              | 266          | 115          | 381          | 26         | 15         | 41         | 292          | 130          | 422          |
| Supervision of Custodian            | 36           | 27           | 63           | 9          | 5          | 14         | 45           | 32           | 77           |
| Supervision of Self                 | 170          | 51           | 221          | 7          | 1          | 8          | 177          | 52           | 229          |
| Pay Costs/Fines                     | 341          | 129          | 470          | 9          | 4          | 13         | 350          | 133          | 483          |
| Waive Costs                         | 799          | 261          | 1,060        | 47         | 53         | 100        | 846          | 314          | 1,160        |
| Monitored Time                      | 9            | 12           | 21           | 0          | 0          | 0          | 9            | 12           | 21           |
| Courtesy Supervision                | 0            | 1            | 1            | 0          | 0          | 0          | 0            | 1            | 1            |
| Case Transferred to Other Court     | 75           | 29           | 104          | 3          | 3          | 6          | 78           | 32           | 110          |
| Case Dismissed                      | 1,782        | 785          | 2,567        | 203        | 181        | 384        | 1,985        | 966          | 2,951        |
| Refer to Other Case                 | 704          | 212          | 916          | 60         | 31         | 91         | 764          | 243          | 1,007        |
| Juvenile Offender Registry          | 4            | 0            | 4            | 0          | 0          | 0          | 4            | 0            | 4            |
| <b>TOTAL OTHER DISPOSITIONS</b>     | <b>4,186</b> | <b>1,622</b> | <b>5,808</b> | <b>364</b> | <b>293</b> | <b>657</b> | <b>4,550</b> | <b>1,915</b> | <b>6,465</b> |
| <b>GRAND TOTAL ALL DISPOSITIONS</b> | <b>5,956</b> | <b>2,059</b> | <b>8,015</b> | <b>420</b> | <b>357</b> | <b>777</b> | <b>6,376</b> | <b>2,416</b> | <b>8,792</b> |

## Table 3: Dispositions in Official Cases (continued)

### DISPOSITIONS IN ABUSE, DEPENDENCY, NEGLECT CASES

|   | <i>Total</i>     |
|---|------------------|
| CFS Temporary Custody:                                    | 715              |
| CFS Permanent Custody:                                    | 164              |
| CFS Planned Permanent Living Arrangement:                 | 12               |
| CFS Emergency Custody:                                    | 103              |
| Sole Custody:   | 859              |
| Shared Custody:   | 10               |
| Shared Parenting:   | 27               |
| Custody Order:  | 18               |
| Mediation Agreement:                                      | 49               |
| Terminate Protective Supervision:                         | 395              |
| Terminate Custody:  | 233              |
| Continue Custody With Review:                             | 1,614            |
| Protective Supervision:                                   | 617              |
| Review:   | 603              |
| Parent Visitation:  | 105              |
| Pay Arrearages:   | 54               |
| Support Awarded:  | 349              |
| Support Modified:   | 151              |
| Support Terminated:                                       | 68               |
| Case Dismissed:   | 681              |
| Recusal:  | 19               |
| Transfer to Other County:                                 | 9                |
| Custody Application Granted:                              | 356              |
| <br><b>TOTAL ABUSE, DEPENDENCY, NEGLECT DISPOSITIONS:</b> | <br><b>7,211</b> |

### DISPOSITIONS IN ADULT CASES

|                                     | <i>Total</i> |
|-------------------------------------|--------------|
| Court Costs/Fines:                  | 5            |
| Waive Court Costs/Fines:            | 7            |
| Execute the Sentence:               | 6            |
| Previous Order Continued in Effect: | 10           |
| Case Dismissed:                     | 23           |
| <b>TOTAL ADULT DISPOSITIONS</b>     | <b>51</b>    |



## Table 3: Dispositions in Official Cases (continued)

### DISPOSITIONS IN PARENT CHILD RELATIONSHIP CASES

|  | <i>Total</i> |
|--|--------------|
| Parent-Child Relationship Established:               | 245          |
| Custody Application Granted:                         | 14           |
| Custody Mediation Agreement:                         | 6            |
| Sole Custody:  | 8            |
| Shared Parenting:                                    | 8            |
| Shared Custody:                                      | 3            |
| Parent Visitation:                                   | 11           |
| Support Awarded:                                     | 344          |
| Support Modified:                                    | 308          |
| Support Terminated:                                  | 177          |
| Custody Order:                                       | 8            |
| Pay Arrearages:                                      | 332          |
| Case Dismissed:                                      | 417          |
| Transfer to Other Court:                             | 2            |
| Power of Attorney:                                   | 1            |
| Refer to Other Case:                                 | 2            |
| <b>TOTAL PARENT CHILD RELATIONSHIP DISPOSITIONS:</b> | <b>1,886</b> |

### DISPOSITIONS IN TRAFFIC CASES

|  |              |
|--|--------------|
| Driver's License Suspended:              | 841          |
| Driver's License Restricted:             | 13           |
| Fine Ordered:                            | 2,292        |
| Costs Ordered:                           | 3,014        |
| Costs Waived:                            | 227          |
| Transferred to Other Court:              | 21           |
| Referred to Driver's Education Programs: | 12           |
| Tobacco Fine:                            | 27           |
| Case Dismissed:                          | 678          |
| Refer to Other Case:                     | 1            |
| <b>TOTAL TRAFFIC DISPOSITIONS:</b>       | <b>7,126</b> |

## Table 3: Dispositions in Official Cases (continued)

| <u>DISPOSITIONS IN CUSTODY CASES</u>        | <i>Total</i>  |
|---|---------------|
| Custody Application Granted:                | 739           |
| Mediation Agreement:                        | 546           |
| Sole Custody:                               | 675           |
| Shared Parenting:                           | 530           |
| Custody Order:                              | 64            |
| Shared Custody:                             | 38            |
| Referred to Mediation:                      | 3             |
| Parental Visitation:                        | 337           |
| Pay Arrearages:                             | 61            |
| Support Awarded:                            | 356           |
| Support Modified:                           | 129           |
| Support Terminated:                         | 58            |
| Case Dismissed:                             | 655           |
| Recusal:                                    | 19            |
| Transfer to Other County:                   | 14            |
| Power of Attorney:                          | 3             |
| <b>TOTAL CUSTODY DISPOSITIONS:</b>          | <b>4,227</b>  |
| <br>  |               |
| <u>DISPOSITIONS IN SUPPORT CASES</u>        |               |
| Support Awarded:                            | 202           |
| Support Modified:                           | 824           |
| Support Terminated:                         | 405           |
| Custody Application Granted:                | 27            |
| Shared parenting:                           | 21            |
| Shared Custody:                             | 1             |
| Sole Custody:                               | 10            |
| Custody Mediation Agreement:                | 22            |
| Pay Arrearages:                             | 762           |
| Parent Visitation:                          | 6             |
| Case Dismissed:                             | 617           |
| Recusal:                                    | 1             |
| Transfer to Other County:                   | 1             |
| <b>TOTAL SUPPORT DISPOSITIONS:</b>          | <b>2,899</b>  |
| <b><u>GRAND TOTAL-ALL DISPOSITIONS:</u></b> | <b>32,192</b> |

**Table 4: Delinquency & Unruly Juveniles, Cases & Charges  
(By Area of Residence)**

**CITY OF CLEVELAND**

| <b>Statistical Planning Area</b> | <i>Total</i>     | <i>Total</i> | <i>Total</i>   | <b>Public</b> |                 |             |              |               |              |
|----------------------------------|------------------|--------------|----------------|---------------|-----------------|-------------|--------------|---------------|--------------|
|                                  | <i>Juveniles</i> | <i>Cases</i> | <i>Charges</i> | <b>Person</b> | <b>Property</b> | <b>Drug</b> | <b>Order</b> | <b>Unruly</b> | <b>Other</b> |
| Archwood-Denison                 | 39               | 63           | 129            | 46            | 41              | 1           | 27           | 0             | 14           |
| Buckeye-Shaker                   | 51               | 77           | 196            | 63            | 56              | 6           | 51           | 1             | 19           |
| Central                          | 98               | 192          | 415            | 156           | 124             | 2           | 93           | 2             | 38           |
| Clark-Fulton                     | 137              | 228          | 568            | 130           | 284             | 3           | 96           | 0             | 55           |
| Corlett                          | 96               | 141          | 300            | 108           | 82              | 9           | 63           | 1             | 37           |
| Cudell                           | 78               | 127          | 246            | 93            | 61              | 2           | 41           | 0             | 49           |
| Detroit-Shoreway                 | 57               | 97           | 161            | 44            | 56              | 8           | 25           | 0             | 28           |
| Downtown                         | 3                | 4            | 10             | 7             | 1               | 0           | 1            | 0             | 1            |
| Edgewater                        | 17               | 26           | 52             | 20            | 10              | 3           | 11           | 0             | 8            |
| Euclid-Green                     | 25               | 35           | 55             | 20            | 13              | 4           | 8            | 0             | 10           |
| Fairfax                          | 41               | 59           | 110            | 38            | 26              | 1           | 31           | 0             | 14           |
| Forest Hills                     | 44               | 71           | 165            | 67            | 55              | 2           | 25           | 0             | 16           |
| Glenville                        | 121              | 206          | 422            | 155           | 129             | 6           | 80           | 1             | 51           |
| Hough                            | 80               | 132          | 268            | 110           | 70              | 4           | 56           | 0             | 28           |
| Industrial Valley                | 1                | 1            | 2              | 0             | 2               | 0           | 0            | 0             | 0            |
| Jefferson                        | 84               | 122          | 282            | 73            | 125             | 11          | 40           | 0             | 33           |
| Kamms Corner                     | 25               | 30           | 38             | 10            | 8               | 1           | 12           | 0             | 7            |
| Kinsman                          | 45               | 73           | 156            | 51            | 47              | 3           | 33           | 0             | 22           |
| Lee-Miles                        | 73               | 109          | 222            | 92            | 61              | 5           | 36           | 0             | 28           |
| Mt. Pleasant                     | 102              | 172          | 386            | 160           | 85              | 6           | 80           | 0             | 55           |
| North Broadway                   | 50               | 75           | 138            | 51            | 32              | 7           | 18           | 0             | 30           |
| North Collinwood                 | 52               | 70           | 170            | 92            | 16              | 3           | 41           | 0             | 18           |
| Ohio City                        | 36               | 52           | 120            | 47            | 39              | 0           | 22           | 0             | 12           |
| Old Brooklyn                     | 107              | 150          | 242            | 76            | 57              | 4           | 44           | 0             | 61           |
| Payne Kirtland Park              | 101              | 172          | 305            | 138           | 60              | 4           | 62           | 0             | 41           |
| Puritas-Longmead                 | 50               | 77           | 140            | 53            | 40              | 3           | 21           | 0             | 23           |
| Riverside                        | 27               | 38           | 77             | 31            | 18              | 0           | 18           | 0             | 10           |
| South Broadway                   | 121              | 193          | 402            | 156           | 93              | 5           | 90           | 0             | 58           |
| South Collinwood                 | 72               | 102          | 231            | 122           | 44              | 1           | 36           | 0             | 28           |
| St. Clair Superior               | 35               | 86           | 212            | 105           | 39              | 1           | 50           | 0             | 17           |
| Tremont                          | 18               | 25           | 39             | 3             | 13              | 0           | 15           | 0             | 8            |

**Table 4: Delinquency & Unruly Juveniles, Cases & Charges  
(By Area of Residence) (continued)**

**CITY OF CLEVELAND (continued)**

| <b>Statistical Planning Area</b> | <b>Total<br/>Juveniles</b> | <b>Total<br/>Cases</b> | <b>Total<br/>Charges</b> | <b>Person</b> | <b>Property</b> | <b>Drug</b> | <b>Public<br/>Order</b> | <b>Unruly</b> | <b>Other</b> |
|----------------------------------|----------------------------|------------------------|--------------------------|---------------|-----------------|-------------|-------------------------|---------------|--------------|
| Union-Miles                      | 76                         | 111                    | 285                      | 97            | 83              | 8           | 65                      | 0             | 32           |
| University                       | 7                          | 10                     | 28                       | 22            | 1               | 0           | 2                       | 0             | 3            |
| West Boulevard                   | 94                         | 138                    | 287                      | 62            | 107             | 9           | 60                      | 0             | 49           |
| Woodland Hills                   | 71                         | 92                     | 206                      | 62            | 80              | 1           | 35                      | 0             | 28           |
| Unknown Cleveland SPA            | 22                         | 28                     | 51                       | 15            | 10              | 1           | 14                      | 0             | 11           |
| Cleveland PO Box                 | 24                         | 59                     | 242                      | 134           | 51              | 2           | 55                      | 0             | 0            |
| <b>CITY OF CLEVELAND TOTAL:</b>  | <b>2,178</b>               | <b>3,441</b>           | <b>7,358</b>             | <b>2,709</b>  | <b>2,119</b>    | <b>126</b>  | <b>1,457</b>            | <b>5</b>      | <b>942</b>   |

**SUBURBS**

|                   |     |     |     |     |     |    |     |   |    |
|-------------------|-----|-----|-----|-----|-----|----|-----|---|----|
| Bay Village       | 11  | 22  | 41  | 10  | 9   | 7  | 12  | 0 | 3  |
| Beachwood         | 5   | 6   | 10  | 4   | 1   | 0  | 2   | 0 | 3  |
| Bedford           | 68  | 130 | 217 | 44  | 85  | 13 | 52  | 0 | 23 |
| Bedford Heights.  | 22  | 43  | 68  | 22  | 16  | 2  | 21  | 0 | 7  |
| Berea             | 66  | 104 | 170 | 54  | 40  | 14 | 38  | 0 | 24 |
| Brecksville       | 8   | 13  | 16  | 2   | 6   | 2  | 5   | 0 | 1  |
| Broadview Heights | 35  | 46  | 72  | 6   | 11  | 22 | 18  | 0 | 15 |
| Brooklyn          | 28  | 34  | 43  | 11  | 5   | 1  | 2   | 0 | 24 |
| Brooklyn Heights  | 2   | 2   | 2   | 0   | 1   | 0  | 0   | 0 | 1  |
| Brookpark         | 66  | 118 | 227 | 60  | 56  | 24 | 63  | 0 | 24 |
| Chagrin Falls     | 17  | 22  | 57  | 11  | 20  | 7  | 16  | 0 | 3  |
| Cleveland Heights | 207 | 336 | 645 | 174 | 210 | 17 | 184 | 0 | 60 |
| East Cleveland    | 98  | 148 | 320 | 72  | 114 | 10 | 85  | 1 | 38 |
| Euclid            | 292 | 506 | 939 | 200 | 371 | 35 | 260 | 3 | 70 |
| Fairview Park     | 29  | 42  | 71  | 12  | 15  | 16 | 23  | 0 | 5  |
| Garfield Heights  | 181 | 297 | 639 | 165 | 218 | 31 | 185 | 1 | 39 |
| Gates Mills       | 2   | 4   | 5   | 3   | 0   | 0  | 1   | 0 | 1  |
| Highland Heights  | 9   | 11  | 134 | 106 | 11  | 7  | 10  | 0 | 0  |
| Highland Hills    | 46  | 143 | 406 | 163 | 141 | 3  | 95  | 0 | 4  |
| Independence      | 4   | 4   | 7   | 4   | 0   | 0  | 1   | 0 | 2  |
| Lakewood          | 107 | 195 | 355 | 58  | 130 | 35 | 85  | 1 | 46 |
| Linndale          | 25  | 45  | 105 | 27  | 40  | 0  | 23  | 0 | 15 |
| Lyndhurst         | 4   | 6   | 8   | 2   | 2   | 0  | 2   | 0 | 2  |

Table 4: Delinquency & Unruly Juveniles, Cases and Charges  
(By Area of Residence) (continued)

**SUBURBS (continued)**

| Statistical Planning Area | Total        | Total        | Total        | Public       |              |            |              |           |            |
|---------------------------|--------------|--------------|--------------|--------------|--------------|------------|--------------|-----------|------------|
|                           | Juveniles    | Cases        | Charges      | Person       | Property     | Drug       | Order        | Unruly    | Other      |
| Maple Heights             | 227          | 448          | 900          | 289          | 317          | 9          | 239          | 2         | 44         |
| Mayfield Heights          | 34           | 58           | 101          | 11           | 39           | 12         | 29           | 0         | 10         |
| Mayfield Village          | 2            | 4            | 6            | 0            | 3            | 0          | 2            | 0         | 1          |
| Middleburg Heights        | 23           | 31           | 53           | 10           | 7            | 13         | 13           | 0         | 10         |
| Moreland Hills            | 2            | 3            | 5            | 0            | 1            | 2          | 1            | 0         | 1          |
| Newburgh Heights          | 9            | 10           | 14           | 2            | 10           | 0          | 1            | 0         | 1          |
| North Olmsted             | 52           | 88           | 127          | 23           | 32           | 21         | 25           | 0         | 26         |
| North Randall             | 1            | 1            | 1            | 0            | 1            | 0          | 0            | 0         | 0          |
| North Royalton            | 38           | 59           | 185          | 7            | 125          | 26         | 10           | 2         | 15         |
| Olmsted Falls             | 8            | 17           | 21           | 11           | 1            | 1          | 5            | 0         | 3          |
| Olmsted Township          | 19           | 26           | 37           | 4            | 3            | 11         | 7            | 0         | 12         |
| Parma                     | 186          | 282          | 406          | 44           | 102          | 32         | 108          | 0         | 120        |
| Parma Heights             | 37           | 73           | 116          | 21           | 33           | 10         | 26           | 1         | 25         |
| Pepper Pike               | 6            | 10           | 19           | 5            | 1            | 4          | 7            | 1         | 1          |
| Richmond Heights          | 22           | 35           | 61           | 18           | 20           | 0          | 18           | 0         | 5          |
| Rocky River               | 24           | 30           | 43           | 14           | 7            | 6          | 10           | 0         | 6          |
| Seven Hills               | 2            | 2            | 3            | 1            | 1            | 0          | 0            | 0         | 1          |
| Shaker Heights            | 53           | 89           | 190          | 69           | 66           | 1          | 44           | 0         | 10         |
| Solon                     | 21           | 25           | 51           | 13           | 16           | 7          | 13           | 0         | 2          |
| South Euclid              | 86           | 133          | 289          | 83           | 102          | 8          | 75           | 0         | 21         |
| Strongsville              | 38           | 49           | 90           | 11           | 25           | 23         | 10           | 0         | 21         |
| University Heights        | 22           | 40           | 83           | 26           | 26           | 5          | 19           | 0         | 7          |
| Walton Hills              | 1            | 1            | 1            | 0            | 0            | 0          | 0            | 0         | 1          |
| Warrensville Heights      | 59           | 89           | 151          | 28           | 62           | 6          | 40           | 0         | 15         |
| Westlake                  | 20           | 30           | 57           | 11           | 12           | 19         | 10           | 0         | 5          |
| <b>SUBURB TOTAL</b>       | <b>2,324</b> | <b>3,910</b> | <b>7,567</b> | <b>1,911</b> | <b>2,514</b> | <b>462</b> | <b>1,895</b> | <b>12</b> | <b>773</b> |

Table 4: Delinquency & Unruly Juveniles, Cases & Charges  
(By Area of Residence) (continued)

**SUBURBS (continued)**

| Statistical Planning Area | Total        | Total        | Total         | Public       |              |            |              |           |              |
|---------------------------|--------------|--------------|---------------|--------------|--------------|------------|--------------|-----------|--------------|
|                           | Juveniles    | Cases        | Charges       | Person       | Property     | Drug       | Order        | Unruly    | Other        |
| <b>CLEVELAND TOTAL</b>    | <b>2,180</b> | <b>3,443</b> | <b>7,358</b>  | 2,709        | 2,119        | 126        | 1,457        | 5         | 942          |
| <b>SUBURB TOTAL</b>       | <b>2,324</b> | <b>3,910</b> | <b>7,567</b>  | 1,911        | 2,514        | 462        | 1,895        | 12        | 773          |
| <b>OUT OF COUNTY</b>      | <b>179</b>   | <b>248</b>   | <b>554</b>    | 199          | 159          | 27         | 138          | 1         | 30           |
| <b>GRAND TOTAL</b>        | <b>4,683</b> | <b>7,601</b> | <b>15,479</b> | <b>4,819</b> | <b>4,792</b> | <b>615</b> | <b>3,490</b> | <b>18</b> | <b>1,745</b> |



Table 5: Official &amp; Bypassed Charges in Delinquency &amp; Unruly Cases

| <u>PERSON OFFENSES</u>                      | <i>Total Charges</i> | <u>DRUG OFFENSES</u>   | <i>Total Charges</i> |
|---|----------------------|--|----------------------|
| <b>Assault</b>                              | <b>1,411</b>         | <b>Drug Possession</b>   | <b>360</b>           |
| Felonious Assault                           | 608                  | <b>Drug Trafficking</b>  | <b>52</b>            |
| Misdemeanor Assault                         | 803                  | <b>Drug Paraphernalia</b>                                      | <b>183</b>           |
| <b>Homicide</b>                             | <b>72</b>            | <b>Other Drug</b>  | <b>20</b>            |
| Aggravated Murder                           | 18                   | <b>TOTAL CHARGES</b>   | <b>615</b>           |
| Murder                                      | 50                   |  |                      |
| Voluntary Manslaughter                      | 1                    | <u>PUBLIC ORDER OFFENSES</u>                                   |                      |
| Aggravated Vehicular Homicide               | 3                    | <b>Disorderly Conduct</b>                                      | <b>875</b>           |
| <b>Sex Offenses</b>                         | <b>730</b>           | <b>Liquor Violations</b>                                       | <b>167</b>           |
| Gross Sexual Imposition                     | 186                  | <b>Obstruction of Justice</b>                                  | <b>708</b>           |
| Rape  | 312                  | <b>Resisting Arrest</b>  | <b>174</b>           |
| Other Sex Offenses                          | 232                  | <b>Riot/Inducing Panic</b>                                     | <b>262</b>           |
| <b>Domestic Violence</b>                    | <b>655</b>           | <b>Weapons</b>   | <b>694</b>           |
| <b>Harassment</b>                           | <b>60</b>            | Felony Weapon  | 512                  |
| <b>Kidnapping</b>                           | <b>483</b>           | Misdemeanor Weapon   | 182                  |
| <b>Menacing</b>                             | <b>361</b>           | <b>Possessing Criminal Tools</b>                               | <b>470</b>           |
| <b>Robbery</b>                              | <b>1,047</b>         | <b>Other Public Order</b>                                      | <b>140</b>           |
| <b>TOTAL CHARGES:</b>                       | <b>4,819</b>         | <b>TOTAL CHARGES</b>   | <b>3,490</b>         |
|   |                      | <u>UNRULY OFFENSES</u>   |                      |
| <u>PROPERTY OFFENSES</u>                    |                      | Unruly Offenses include truancy,<br>curfew and incorrigibility |                      |
| <b>Arson</b>                                | <b>60</b>            | <b>TOTAL CHARGES:</b>  | <b>1,745</b>         |
| <b>Burglary</b>                             | <b>355</b>           |  |                      |
| <b>Fraud/Forgery/Misuse of Credit Cards</b> | <b>57</b>            | <u>OTHER OFFENSES</u>  |                      |
| <b>Receiving Stolen Property</b>            | <b>856</b>           | <b>Other Delinquency</b>                                       |                      |
| <b>Theft</b>                                | <b>2,091</b>         | <b>TOTAL CHARGES:</b>  | <b>18</b>            |
| <b>Trespassing</b>                          | <b>609</b>           |  |                      |
| <b>Vandalism</b>                            | <b>764</b>           | <b>GRAND TOTAL:</b>  | <b>15,479</b>        |
| <b>TOTAL CHARGES</b>                        | <b>4,792</b>         |  |                      |

## Table 6: Detention Services Population

|                                  | Detention Center |            |              | Home Detention |            |              | Day Reporting |          |              |
|----------------------------------|------------------|------------|--------------|----------------|------------|--------------|---------------|----------|--------------|
|                                  | Male             | Female     | <i>Total</i> | Male           | Female     | <i>Total</i> | Male          | Female   | <i>Total</i> |
| <b>Admissions</b>                |                  |            |              |                |            |              |               |          |              |
| Black                            | 1,639            | 566        | <b>2,205</b> | 824            | 252        | <b>1,076</b> | 0             | 0        | <b>0</b>     |
| White                            | 259              | 103        | <b>362</b>   | 142            | 43         | <b>185</b>   | 1             | 0        | <b>1</b>     |
| Hispanic                         | 77               | 29         | <b>106</b>   | 38             | 14         | <b>52</b>    | 1             | 0        | <b>1</b>     |
| Asian                            | 0                | 4          | <b>4</b>     | 0              | 0          | <b>0</b>     | 0             | 0        | <b>0</b>     |
| Other                            | 25               | 16         | <b>41</b>    | 14             | 10         | <b>24</b>    | 0             | 0        | <b>0</b>     |
| <i>Total:</i>                    | <b>2,000</b>     | <b>718</b> | <b>2,718</b> | <b>1,018</b>   | <b>319</b> | <b>1,337</b> | <b>2</b>      | <b>0</b> | <b>2</b>     |
| <b>Average Daily Population:</b> | 141.6            | 18.8       | <b>160.4</b> | 105.3          | 27.3       | <b>132.6</b> | 1.5           | 0        | <b>1.5</b>   |
| <b>Average Length Of Stay:</b>   | 32.9             | 11.6       | <b>24.5</b>  | 42.6           | 36.0       | <b>37.7</b>  | 129.6         | 0        | <b>129.6</b> |

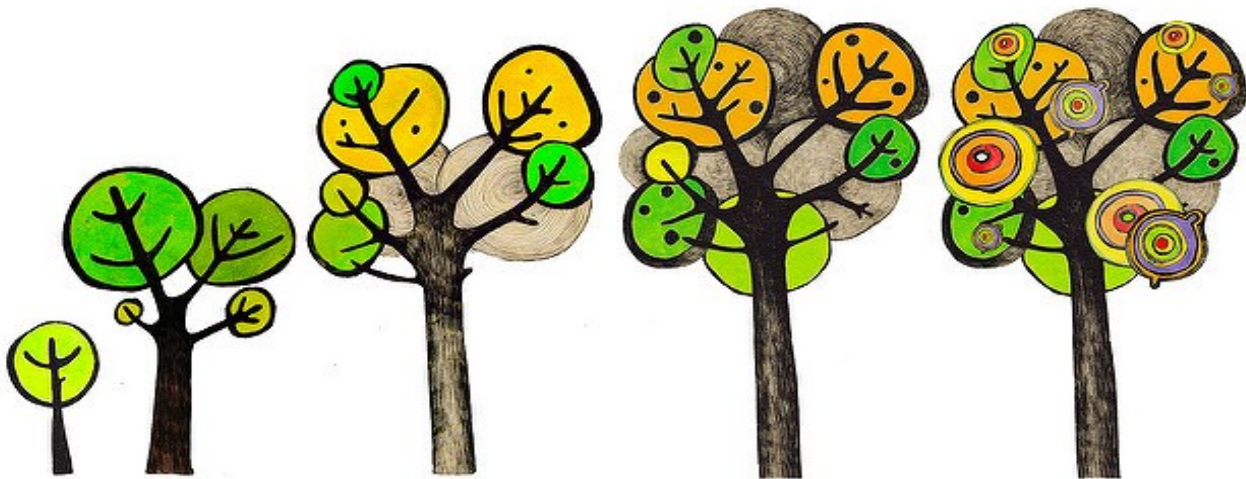
|                                  | Home Detention with Day Reporting |          |              | Shelter Care |            |              | Total Detention Services |              |              |
|----------------------------------|-----------------------------------|----------|--------------|--------------|------------|--------------|--------------------------|--------------|--------------|
|                                  | Male                              | Female   | <i>Total</i> | Male         | Female     | <i>Total</i> | Male                     | Female       | <i>Total</i> |
| <b>Admissions</b>                |                                   |          |              |              |            |              |                          |              |              |
| Black                            | 73                                | 1        | <b>74</b>    | 242          | 123        | <b>365</b>   | <b>2,778</b>             | <b>942</b>   | <b>3,720</b> |
| White                            | 10                                | 0        | <b>10</b>    | 46           | 22         | <b>68</b>    | <b>458</b>               | <b>168</b>   | <b>626</b>   |
| Hispanic                         | 1                                 | 0        | <b>1</b>     | 13           | 7          | <b>20</b>    | <b>130</b>               | <b>50</b>    | <b>180</b>   |
| Asian                            | 0                                 | 0        | <b>0</b>     | 0            | 0          | <b>0</b>     | <b>0</b>                 | <b>4</b>     | <b>4</b>     |
| Other                            | 2                                 | 0        | <b>2</b>     | 7            | 1          | <b>8</b>     | <b>48</b>                | <b>27</b>    | <b>75</b>    |
| <i>Total:</i>                    | <b>86</b>                         | <b>1</b> | <b>87</b>    | <b>308</b>   | <b>153</b> | <b>461</b>   | <b>3,414</b>             | <b>1,191</b> | <b>4,605</b> |
| <b>Average Daily Population:</b> | 5.7                               | 0.1      | <b>5.8</b>   | 21.7         | 8.1        | <b>225.1</b> | <b>275.8</b>             | <b>54.3</b>  | <b>330.1</b> |
| <b>Average Length Of Stay:</b>   | 26.9                              | 20       | <b>25.8</b>  | 28.4         | 21.1       | <b>25.2</b>  | <b>35.5</b>              | <b>19.7</b>  | <b>26.0</b>  |



## Table 7: Age at Filing

### AGE AT FILING

|              | Male         | Female       | Total        |
|--------------|--------------|--------------|--------------|
| 8 and under  | 2            | 0            | 2            |
| 9            | 9            | 3            | 12           |
| 10           | 20           | 7            | 27           |
| 11           | 49           | 19           | 68           |
| 12           | 97           | 53           | 150          |
| 13           | 196          | 128          | 324          |
| 14           | 330          | 203          | 533          |
| 15           | 577          | 299          | 876          |
| 16           | 669          | 410          | 1,079        |
| 17           | 788          | 420          | 1,208        |
| 18+          | 275          | 129          | 404          |
| <b>Total</b> | <b>3,012</b> | <b>1,671</b> | <b>4,683</b> |



## 2016 ODYS INSTITUTIONAL POPULATION

| <u>RACE</u>                   |            |               | <u>OFFENSES</u>                                       |            |               |
|-------------------------------|------------|---------------|---|------------|---------------|
|                               | Number     | Percentage    |   | Number     | Percentage    |
| African American              | 94         | 89.5%         | Abduction   | 1          | 1.0%          |
| Caucasian                     | 8          | 7.6%          | Aggravated robbery                                    | 24         | 22.9%         |
| Hispanic                      | 3          | 2.9%          | Assault   | 2          | 1.9%          |
| Asian                         | 0          | 0.0%          | Breaking and Entering                                 | 1          | 1.0%          |
| Other                         | 0          | 0.0%          | Burglary  | 11         | 10.5%         |
| <b>Total</b>                  | <b>105</b> | <b>100.0%</b> | Carrying a Concealed Weapon                           | 10         | 9.5%          |
| <u>GENDER</u>                 |            |               | Complicity  | 1          | 1.0%          |
|                               | Number     | Percentage    | Criminal gang activity                                | 8          | 7.6%          |
| Male                          | 99         | 94.3%         | Domestic Violence                                     | 2          | 1.9%          |
| Female                        | 6          | 5.7%          | Escape  | 2          | 1.9%          |
| <b>Total</b>                  | <b>105</b> | <b>100.0%</b> | Failure to comply                                     | 3          | 2.9%          |
| <u>CURRENT OFFENSE LEVEL</u>  |            |               | Felonious assault                                     | 4          | 3.8%          |
|                               | Number     | Percentage    | Gross sexual imposition                               | 3          | 2.9%          |
| F1                            | 33         | 31.4%         | Importuning   | 1          | 1.0%          |
| F2                            | 33         | 31.4%         | Improperly discharge firearm                          | 1          | 1.0%          |
| F3                            | 15         | 14.3%         | Kidnapping  | 7          | 6.7%          |
| F4                            | 21         | 20.0%         | Rape  | 2          | 1.9%          |
| F5                            | 3          | 2.9%          | Receiving stolen property                             | 5          | 4.8%          |
| Other                         | 0          | 0.0%          | Robbery   | 11         | 10.5%         |
| <b>Total</b>                  | <b>105</b> | <b>100.0%</b> | Theft   | 5          | 4.8%          |
| <u>GUN/GANG SPECIFICATION</u> |            |               | Unauthorized use motor vehicle                        | 1          | 1.0%          |
|                               | Number     | Percentage    | <b>Total</b>  | <b>105</b> | <b>100.0%</b> |
| One Year                      | 13         | 12.4%         | <u>AGE AT COMMITMENT</u>                              |            |               |
| Two Year                      | 5          | 4.8%          |   | Number     | Percentage    |
| Three Year                    | 6          | 5.7%          | 14 -14.9 years old                                    | 3          | 2.9%          |
| Four Year +                   | 0          | 0.0%          | 15 - 15.9 years old                                   | 19         | 18.1%         |
| None                          | 81         | 77.1%         | 16 - 16.9 years old                                   | 25         | 23.8%         |
| <b>Total</b>                  | <b>105</b> | <b>100.0%</b> | 17 -17.9 years old                                    | 38         | 36.2%         |
| <u>INSTITUTIONAL STATUS</u>   |            |               | 18 - 18.9 years old                                   | 18         | 17.1%         |
|                               | Number     | Percentage    | 19 - 20.9 years old                                   | 2          | 1.9%          |
| New Charge                    | 97         | 92.4%         | <b>Total</b>  | <b>105</b> | <b>100.0%</b> |
| Revocation                    | 7          | 6.7%          | Average age at placement of ODYS youth in 2016 is 17. |            |               |
| New Charge & Revocation       | 1          | 1.0%          |   |            |               |
| <b>Total</b>                  | <b>105</b> | <b>100.0%</b> |   |            |               |

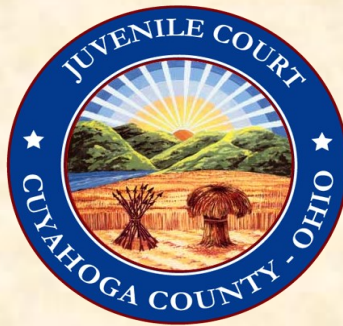
# NOTES

# 2016



## Annual Report

**Cuyahoga County Juvenile Justice Center**



**9300 Quincy Avenue**

**Cleveland, Ohio 44106**

**Phone: 216 443-8400**

**<http://juvenile.cuyahogacounty.us>**